



2024-25



Undergraduate prospectus



**Innovative
Degrees**

**Interdisciplinary
Study**

**Global
Experience**

Study at a University with a reputation for delivering an outstanding higher education experience, exceeding all Russell Group universities for overall student satisfaction in the UK's National Student Survey for four consecutive years (2019, 2020, 2021 and 2022).

Northeastern University London offers a vibrant, collegiate community delivering academically challenging degree programmes, designed to equip graduates with the combination of skills and knowledge that are increasingly desired by organisations, employers and society.

Northeastern University London has a truly international outlook, while retaining its academic independence as a UK higher education provider with its own degree awarding powers.

Northeastern University London is part of the Northeastern University Global Campus Network offering our students a wide range of immersive international opportunities.

Northeastern University* is a highly ranked teaching and research institution with campuses in Boston, Charlotte, Oakland, Seattle, Silicon Valley, Toronto and Vancouver.

INNOVATIVE DEGREES TAILORED TO TOMORROW'S STUDENTS

Our degrees are designed to provide students with rigorous and in-depth subject study, while developing a range of practical transferable skills and exploring a variety of complementary disciplines. Degree courses are built around real-world challenges empowering meaningful impact in a fast changing world.

FOCUS ON ONE SUBJECT OR STUDY MULTIPLE SUBJECTS

Personalised elective pathways enable you to deepen focus in your degree subject or explore a broader range of other subjects, developing agile thinking across disciplinary boundaries.

STUDY ABROAD

Northeastern University London's degree programmes offer students flexible, exciting and immersive international study opportunities. Students can choose to spend a semester or a year studying abroad, or a combination of both.

DOUBLE DEGREE

In addition to three year UK degree programmes, Northeastern University London offers unique and exciting opportunities for students to study for two globally recognised degrees simultaneously over four years, a UK degree awarded by Northeastern University London, and a US degree awarded by Northeastern University (Boston, MA).

There are also options to study for a UK undergraduate degree and a US Masters degree over just four years, or a UK undergraduate degree and UK Masters degree.

* Northeastern University is ranked #44 among US universities.

Inside

- 03 Introduction
- 05 Experience the University
- 06 Degree programmes
- 20 Interdisciplinary study
- 21 Global experience
- 22 Degree programme options
- 25 Study abroad
- 26 Your learning experience
- 27 Preparing for your career
- 29 Our learning environment
- 30 Our sustainable campus
- 31 Libraries & study spaces
- 33 Widening participation
- 35 International students
- 36 Careers support
- 37 Student Support and Development
- 38 Our graduates
- 41 London life
- 42 Student union
- 43 Accommodation
- 44 How to apply
- 45 Entry requirements
- 47 Fees & funding

"Everyone at the University was friendly, welcoming, and inviting. The talks were informative, especially about careers, and I got to ask any questions I had about the courses. Overall, a wonderful experience!"

Open Day Attendee

Experience Northeastern University London for yourself!

We have a wide range of events on offer for you to find out what makes studying at NU London such a unique experience.

OPEN DAYS

Open Days are the best way to get an insight into what it's like to study NU London. Come and explore our stunning state-of-the-art campus right in the heart of London. Take part in subject sessions, join an interdisciplinary discussion, learn about our careers support, find out about student life, chat to our current students and academic faculty, and discover the lively waterside community at St Katharine Docks, home to our campus.

You can even take in the iconic sights of Tower Bridge and the Tower of London!

CAMPUS TOURS

One of our current students will show you around our magnificent campus and tell you about university life at NU London.

Tours are followed by a presentation outlining our degree programmes, student life, and the application process, with a short Q&A session at the end.

Places are limited and advance booking is essential.

ONLINE TASTER LECTURES

Let our world-class faculty inspire you! We hold online taster lectures throughout the year. Taster lectures are a great way to experience university level teaching, to widen your knowledge and to get inspiration for your personal statement.

PERSONAL STATEMENT INFORMATION SESSIONS

Get advice and guidance on writing your personal statement alongside top tips for applying to NU London.

Full details about all the events taking place at the University can be found at nulondon.ac.uk/visit



01 Innovative Degrees



Award
Business BSc (Hons)

UCAS code
BU1A

Start date
2nd September 2024

Location
St Katharine Docks,
London

Study abroad
Semester in USA
(Optional)

**Degree
awarding body**
Northeastern University
London

Study mode
Full-time

Duration
3 years

Annual tuition fees
Home: £9,250
International: £26,500

Entry requirements
AAB at A Level
35 points IB Diploma
or the equivalent
Maths at C/4

Student satisfaction
83% (National Student
Survey 2022)

**Eligible for
Double Degree**
Yes

For full course details
please visit our website
[nulondon.ac.uk/
business](https://nulondon.ac.uk/business)

Business BSc (Hons)

The study of Business covers a wide range of fields and considers the advantages and disadvantages of the different approaches and the challenges businesses face to achieve the objectives of their stakeholders including shareholders, consumers, government, and wider society.

The BSc (Hons) Business examines all aspects of business. Courses use case studies and examples drawn from a wide range of business types (from entrepreneurs to global corporations), to understand the varying ways businesses can operate and be managed.

The curriculum includes courses in marketing, management, operations, finance, supply chain, innovation, fintech, statistics, global responsibility and sustainability.

This degree programme combines a rigorous business syllabus with a personalised elective pathway, enabling you to deepen focus in your degree subject or explore a broader range of other subjects, developing agile thinking across disciplinary boundaries.

Business students develop technical skills as well as critical thinking and analysis skills, making them highly employable with a wide array of career opportunities. These valuable and transferable skills open up a wide array of career possibilities upon graduation.

INDICATIVE COURSES*

YEAR 1

- International Business and Global Responsibility
- Financial Accounting & Reporting
- Introduction to Marketing
- Introduction to Economics OR Principles of Macroeconomics AND Principles of Microeconomics
- Plus, **FOUR** elective courses (see page 20)

The following elective courses are recommended

- Calculus for Business or
- Mathematical Methods I

YEAR 2

(Option to study abroad and follow US curriculum courses at a Northeastern University campus in the USA, in the second semester)

- People and Organisations
- Business Statistics
- Management Information Systems
- Financial Management
- Plus, **FOUR** elective courses (see page 20)

YEAR 3

- Innovation!
- Supply Chain and Operations Management
- Strategic Analysis and Decision Making
- Sustainability in the Business Environment OR Fintech and Financial Innovation
- Plus, **TWO** elective courses (see page 20)
- Final Project (Business)

* The list of courses above is indicative of those that are currently planned for students commencing their undergraduate degree in September 2024, and is subject to approval. The courses that run in each academic year are subject to change in line with faculty availability and student demand, and may have limited capacity or be unavailable to you due to the timetable. There is, therefore, no guarantee every course will be available every year.

Data Science BSc (Hons)

As data becomes one of the world's most valuable resources, the demand for data scientists is rising rapidly. Organisations and service providers are looking to increase their technological capacities and their requirements for programming and machine learning skills to analyse and interpret data. Data Science has emerged as a vital discipline.

The BSc (Hons) Data Science focuses on the collection, storage, retrieval and computational analysis of data in various forms (from images to text) and scales (from small to big data), covering key topics such as programming, machine learning and data mining, and information visualisation. The programme teaches the knowledge and techniques to programme with data, learn from data, interpret and visualise it in a way that solves real-world problems.

This degree programme combines a rigorous data science syllabus with a personalised elective pathway, enabling you to deepen focus in your degree subject or explore a broader range of other subjects, developing agile thinking across disciplinary boundaries.

The BSc (Hons) Data Science is designed to equip students with key tools and skills that will enable them to tackle real-world challenges at the heart of our digital economy. These valuable and transferable skills open up a wide array of career possibilities upon graduation, preparing students to become the next-generation leaders with sustained impact and success.

INDICATIVE COURSES*

YEAR 1

- Discrete Structures
- Programming with Data
- Intermediate Programming with Data
- Probability and Statistics
- Plus, **FOUR** elective courses (see page 20)

YEAR 2

(Option to study abroad and follow US curriculum courses at a Northeastern University campus in the USA, in the second semester)

- Advanced Programming with Data
- Foundations of Data Science
- Database Design
- Information Presentation and Visualisation
- Plus, **FOUR** elective courses (see page 20)

YEAR 3

- Machine Learning and Data Mining I
- Machine Learning and Data Mining II
- Large-Scale Information Storage and Retrieval
- Plus, **THREE** elective courses (see page 20)
- Final Project (Data Science)

Award

Data Science
BSc (Hons)

UCAS code
D1S2

Start date
2nd September 2024

Location
St Katharine Docks,
London

Study abroad
Semester in USA
(Optional)

Degree awarding body
Northeastern
University London

Study mode
Full-time

Duration
3 years

Annual tuition fees
Home: £9,250
International: £26,500

Entry requirements
AAB at A Level
35 points IB Diploma
or the equivalent
Maths at C/4

Student satisfaction
83% (National Student
Survey 2022)

Eligible for Double Degree
Yes

For full course details
please visit our
website
[nulondon.ac.uk/
data-science](https://nulondon.ac.uk/data-science)

Award
Economics BSc (Hons)

UCAS code
E10

Start date
2nd September 2024

Location
St Katharine
Docks, London

Study abroad
Semester in USA
(Optional)

Degree awarding body
Northeastern
University London

Study mode
Full-time

Duration
3 years

Annual tuition fees
Home: £9,250
International: £22,250

Entry requirements
AAB at A Level
35 points IB Diploma
or the equivalent
Maths at C/4

Student satisfaction
83% (National Student
Survey 2022)

Eligible for Double Degree
Yes

For full course details
please visit our
website
[nulondon.ac.uk/
economics](https://nulondon.ac.uk/economics)

Economics BSc (Hons)

The BSc (Hons) Economics is infused with a strong global interest, using case studies and examples from around the world, and in many courses, students are able to choose a case study for their assessments.

The economics curriculum covers three key elements of economics: economic theory (microeconomics and macroeconomics), quantitative study (mathematics, statistics, econometrics), and specialist contextual study (for example, economic history, finance, and political economy).

This degree programme combines a rigorous economics syllabus with a personalised elective pathway, enabling you to deepen focus in your degree subject or explore a broader range of other subjects, developing agile thinking across disciplinary boundaries.

Economics students develop a wide range of skills. They become disciplined thinkers and problem-solvers, competent in both quantitative and qualitative analysis, and highly equipped in the inquiry of how societies might develop and progress their material and psychological well-being, as well as being analysers of human behaviour. Students develop vital credentials to manage data and analyse it, and to communicate their results in ways that are suitable for diverse audiences.

These valuable and transferable skills open up a wide array of career possibilities upon graduation.

INDICATIVE COURSES*

YEAR 1

- Principles of Microeconomics
- Principles of Macroeconomics
- Mathematics
- Statistics
- Plus, **FOUR** elective courses (see page 20)

YEAR 2

(Option to study abroad and follow US curriculum courses at a Northeastern University campus in the USA in the second semester)

- Microeconomics & Behaviour
- Macroeconomics & Economic Crises
- Econometrics & Programming
- Economic History
OR Advancing Global Progress
- Plus, **FOUR** elective courses (see page 20)

YEAR 3

- Social and Heterodox Economics
- Plus, **THREE** of
 - Political Economy and Globalisation
 - Political Economy in Action
 - Financial Management
 - Corporate Finance
 - Econometrics and Forecasting
- Plus, **TWO** elective courses (see page 20)
- Final Project (Economics)

* The list of courses above is indicative of those that are currently planned for students commencing their undergraduate degree in September 2024, and is subject to approval. The courses that run in each academic year are subject to change in line with faculty availability and student demand, and may have limited capacity or be unavailable to you due to the timetable. There is, therefore, no guarantee every course will be available every year.

* The list of courses above is indicative of those that are currently planned for students commencing their undergraduate degree in September 2024, and is subject to approval. The courses that run in each academic year are subject to change in line with faculty availability and student demand, and may have limited capacity or be unavailable to you due to the timetable. There is, therefore, no guarantee every course will be available every year.

English BA (Hons)

Bring rigour to your thinking and advance your powers of engagement with both literary texts and the issues and contexts with which they engage. Develop your skills in analysing literature, learning how writers have responded to their situations, cultures, and the literature of their contemporaries, while gaining the tools and confidence to become an original and discerning critic of literature and of wider world issues.

The BA (Hons) English combines broad coverage of literature across periods and genres with thematic concentrations ranging from 'Satire, Feeling, Innovation' to 'Literature, Land and the Environment', and regional concentrations including North America and the location of your studies – London. Throughout there is a distinctive emphasis on how writing not only reflects but influences change in the world, and students are instructed in how to become more discerning, more sceptical and more appreciative readers of everything from lyric poetry to literary criticism to newspaper articles to political speeches.

This degree programme combines a rigorous English syllabus with a personalised elective pathway, enabling you to deepen focus in your degree subject or explore a broader range of other subjects, developing agile thinking across disciplinary boundaries.

English graduates have strong oral and written communication skills. They combine planning and research with critical thinking, and can clearly evaluate competing perspectives and present ideas to a range of audiences. These fundamental strengths are highly sought after across sectors, and as such open up a wide array of career possibilities upon graduation.

INDICATIVE COURSES*

YEAR 1

- Criticism: Practice
- The Victorians and Us
- Revolution, Rebirth, Religion: Early Modern Poetry
- British Drama and the London Stage
- Plus, **FOUR** elective courses (see page 20)

YEAR 2

(Option to study abroad and follow US curriculum courses at a Northeastern University campus in the USA in the second semester)

- Criticism: Theory
- Shakespeare: Seven Plays
- Satire, Feeling, Innovation: 18th Century and Romantic Period Poetry and Prose
- Modernism/Postmodernism OR Literature and Decolonisation
- Plus, **FOUR** elective courses (see page 20)

YEAR 3

- Literature, Land and the Environment
- North American Narratives/ Counternarratives
- London: Literature, Culture, Identity
- Contemporary Writing: 2000 – Now
- Plus, **TWO** elective courses (see page 20)
- Final Project (English)

Award

English BA (Hons)

UCAS Code

2ENG

Start date

2nd September 2024

Location

St Katharine Docks, London

Study abroad

Semester in USA (Optional)

Degree

awarding body
Northeastern University London

Study mode

Full-time

Duration

3 years

Annual tuition fees

Home: £9,250
International: £22,250

Entry requirements

AAB at A Level
35 points IB Diploma or the equivalent

Student satisfaction

83% (National Student Survey 2022)

Eligible for Double Degree

Yes

For full course details please visit our website

nulondon.ac.uk/english

Award

History BA (Hons)

UCAS code

H1ST

Start date

2nd September 2024

Location

St Katharine Docks, London

Study abroad

Semester in USA (Optional)

Degree

awarding body
Northeastern University London

Study mode

Full-time

Duration

3 years

Annual tuition fees

Home: £9,250
International: £22,250

Entry requirements

AAB at A Level
35 points IB Diploma or the equivalent

Student satisfaction

83% (National Student Survey 2022)

Eligible for Double Degree

Yes

For full course details please visit our website

nulondon.ac.uk/history

History BA (Hons)

Our campus is centred in history, set alongside the iconic Tower of London, the busy river Thames, and bustling St Katharine Docks, where people and goods embarked and arrived on their way to and from the British Empire and the wider world. Fascination with the deep history of Britain and the world and the global connections that created the modern world, runs through our BA (Hons) History degree.

The BA (Hons) History introduces students to the full range of history from modern to mediaeval, from local to global, and develops the skills needed to analyse historical sources and to communicate their findings to the wider public.

This degree programme combines a rigorous history syllabus with a personalised elective pathway, enabling you to deepen focus in your degree subject or explore a broader range of other subjects, developing agile thinking across disciplinary boundaries.

History students develop strong analytical and communication skills, they are adept at conducting research and critically assessing sources and can apply the knowledge needed to understand our past and present and the skills to shape our future. These valuable and transferable skills open up a wide array of career possibilities upon graduation.

INDICATIVE COURSES*

YEAR 1

- World History Until 1945
- The World Since 1945
- Historians' Craft
- In the Shadow of the Tower: Crusade, Plague & Persecution in Mediaeval Europe
- Plus, **FOUR** elective courses (see page 20)

YEAR 2

(Option to study abroad and follow US curriculum courses at a Northeastern University campus in the USA in the second semester)

- Public History and Heritage
- London's World War
- Plus, **TWO** History courses from the University Courses list
- Plus, **FOUR** elective courses (see page 20)

YEAR 3

- **FOUR** History courses from the University Courses list
- Plus, **TWO** elective courses (see page 20)
- Final Project (History)

* The list of courses above is indicative of those that are currently planned for students commencing their undergraduate degree in September 2024, and is subject to approval. The courses that run in each academic year are subject to change in line with faculty availability and student demand, and may have limited capacity or be unavailable to you due to the timetable. There is, therefore, no guarantee every course will be available every year.

* The list of courses above is indicative of those that are currently planned for students commencing their undergraduate degree in September 2024, and is subject to approval. The courses that run in each academic year are subject to change in line with faculty availability and student demand, and may have limited capacity or be unavailable to you due to the timetable. There is, therefore, no guarantee every course will be available every year.

Law LLB (Hons)

Our Law curriculum includes courses in contract law, constitutional law, criminal law, tort law, competition law and property law, providing the main building blocks of a legal education, including all requirements for a qualifying law degree.

NU London offers a unique and comprehensive career development pathway for Law students, tailored to your specific professional aspirations. Through one-to-one careers advice combined with seminars, workshops, and guest speakers, we will guide and support you in choosing and preparing for your career in Law, nurturing you through your applications for training contracts, vacation schemes and pupillages.

This degree programme combines a rigorous law syllabus with a personalised elective pathway, enabling you to deepen focus in your degree subject or explore a broader range of other subjects, developing agile thinking across disciplinary boundaries.

As well as gaining the opportunity for a career in Law, or further legal studies, Law students are disciplined thinkers and problem-solvers, able to collect appropriate material from a broad range of sources, and undertake projects to develop and promote critical thinking with excellent communication skills. These valuable and transferable skills open up a wide array of career possibilities upon graduation.

INDICATIVE COURSES*

YEAR 1

- Contract Law
- Contract Law in Context: Extensions and Developments
- Constitutional Law
- Constitutional Law in Context: Extensions and Developments
- Criminal Law
- Criminal Law in Context: Extensions and Developments
- Plus, **TWO** elective courses (see page 20)

YEAR 2

(Option to study abroad and follow US curriculum courses at a Northeastern University campus in the USA in the second semester)

- Tort Law
- Tort Law in Context: Extensions and Developments
- Equity and Trusts
- Legal Research and Advocacy Legal Research Symposium
- Plus, **FOUR** elective courses (see page 20)

YEAR 3

- Property Law
- European Union Law Post-Brexit
- At least **TWO** courses from
 - Law and Innovation: Digital, Online and Technology Law
 - Antitrust and Competition Law in the Global Economy
 - Criminology
 - Employment Law in an International Context
 - Jurisprudence and Contemporary Legal Theory
- Plus, up to **TWO** elective courses (see page 20)
- Final Project (Law):
 - Legal Research Symposium OR
 - Dissertation

Award

Law LLB (Hons)

UCAS code

L4AW

Start date

2nd September 2024

Location

St Katharine Docks, London

Study abroad

Semester in USA (Optional)

Degree

awarding body
Northeastern University London

Study mode

Full-time

Duration

3 years

Annual tuition fees

Home: £9,250
International: £22,250

Entry requirements

AAB at A Level
35 points IB Diploma or the equivalent

Student satisfaction

83% (National Student Survey 2022)

Eligible for

Double Degree

No

For full course details please visit our website

nulondon.ac.uk/law

Award

Philosophy BA (Hons)

UCAS code

PH1L

Start date

2nd September 2024

Location

St Katharine Docks, London

Study abroad

Semester in USA (Optional)

Degree

awarding body
Northeastern University London

Study mode

Full-time

Duration

3 years

Annual tuition fees

Home: £9,250
International: £22,250

Entry requirements

AAB at A Level
35 points IB Diploma or the equivalent

Student satisfaction

83% (National Student Survey 2022)

Eligible for

Double Degree

Yes

For full course details please visit our website

nulondon.ac.uk/philosophy

Philosophy BA (Hons)

The BA (Hons) Philosophy is concerned with fundamental questions about, among other topics, the nature of reality, what we can know, and how we should act, and engages with some of the most searching, creative and influential thinkers of the past two-and-a-half thousand years.

Students explore central questions, arguments, theories and texts concerning the world and our place within it, developing rigour and clarity in thinking and writing.

This degree programme combines a rigorous philosophy syllabus with a personalised elective pathway, enabling you to deepen focus in your degree subject or explore a broader range of other subjects, developing agile thinking across disciplinary boundaries.

This undergraduate degree equips you with a combination of analytical, critical thinking, and research skills, alongside communication and problem solving capabilities that are highly prized in the evolving employment market. These valuable and transferable skills open up a wide array of career possibilities upon graduation.

INDICATIVE COURSES*

YEAR 1

- Introduction to Philosophy
- Early Modern Philosophy
- Introduction to Logic
- Technology and Human Values
- Plus, **FOUR** elective courses (see page 20)

YEAR 2

(Option to study abroad and follow US curriculum courses at a Northeastern University campus in the USA in the second semester)

- Ancient Philosophy
- Ethics
- Plus **TWO** Philosophy courses from the University Courses list at least one of which is theoretical philosophy
- Plus, **FOUR** elective courses (see page 20)

YEAR 3

- Plus **FOUR** Philosophy courses from the University Courses list
- Plus, **TWO** elective courses (see page 20)
- Final Project (Philosophy)

* The list of courses above is indicative of those that are currently planned for students commencing their undergraduate degree in September 2024, and is subject to approval. The courses that run in each academic year are subject to change in line with faculty availability and student demand, and may have limited capacity or be unavailable to you due to the timetable. There is, therefore, no guarantee every course will be available every year.

* The list of courses above is indicative of those that are currently planned for students commencing their undergraduate degree in September 2024, and is subject to approval. The courses that run in each academic year are subject to change in line with faculty availability and student demand, and may have limited capacity or be unavailable to you due to the timetable. There is, therefore, no guarantee every course will be available every year.

Politics & International Relations BSc (Hons)

Studying Politics & International Relations at our campus in London offers the city as a classroom, with the seat of the UK government and many of its agencies, prominent international organisations (e.g. UN IMO), world-renowned research institutes (e.g. Chatham House – The Royal Institute of International Affairs), think-tanks (e.g. Adam Smith Institute), policy centres (e.g. Global Policy Institute), and many archives and libraries immediately surrounding our campus. This offers students one of the most current and vibrant environments to explore the political discourses defining our present and future.

The BSc (Hons) Politics & International Relations degree comprises: political science – analysing the organisation of government and society; political theory – examining normative questions, political ideas, and ideologies; and international relations – concerned with international problems of war, peace, security, economy, globalisation, and the conflicting and cooperative engagement amongst states and between state and non-state actors.

This degree programme combines a rigorous Politics and IR syllabus with a personalised elective pathway, enabling you to deepen focus in your degree subject or explore a broad range of other subjects, developing agile thinking across disciplinary boundaries.

Students develop a broad range of skills and knowledge relevant to institutional decision – and policy-making. Graduates can manage complex information flows and networks, collect appropriate material from a broad range of sources, and undertake projects to develop and promote critical thinking. Students can contribute to debates on topical issues. These valuable and transferable skills open up a wide array of career possibilities upon graduation.

INDICATIVE COURSES*

YEAR 1

- Introduction to Politics and International Relations
- Comparative Politics
- Foundations of Western Political Thought
- International Relations in Practice
- Plus, **FOUR** elective courses (see page 20)

YEAR 2

(Option to study abroad and follow US curriculum courses at a Northeastern University campus in the USA in the second semester)

- Decolonising International Relations
- The European Union in the World
- Political Arguments in Action
- Plus **ONE** Politics & International Relations course from the University Courses list
- Plus, **FOUR** elective courses (see page 20)

YEAR 3

- International Organisations
- Security Studies
- Plus **TWO** Politics and International Relations courses from the University Courses list
- Plus, **TWO** elective courses (see page 20)
- Final Project (Politics & International Relations)

Award

Politics & International Relations BSc (Hons)

UCAS code
P21R

Start date

2nd September 2024

Location

St Katharine Docks, London

Study abroad

Semester in USA (Optional)

Degree

awarding body
Northeastern University London

Study mode

Full-time

Duration

3 years

Annual tuition fees

Home: £9,250
International: £22,250

Entry requirements

AAB at A Level
35 points IB Diploma or the equivalent

Student satisfaction

83% (National Student Survey 2022)

Eligible for

Double Degree
Yes

For full course details please visit our website

nulondon.ac.uk/politics

Award

Psychology BA (Hons)

UCAS code
6P5Y

Start date

2nd September 2024

Location

St Katharine Docks, London

Study abroad

Semester in USA (Optional)

Degree

awarding body
Northeastern University London

Study mode

Full-time

Duration

3 years

Annual tuition fees

Home: £9,250
International: £22,250

Entry requirements

AAB at A Level
35 points IB Diploma or the equivalent
Maths at B/6

Student satisfaction

83% (National Student Survey 2022)

Eligible for

Double Degree
Yes

For full course details please visit our website

nulondon.ac.uk/psychology

Psychology BA (Hons)

Find out why humans think, feel and act the way they do. Psychology is the scientific study of mind and behaviour.

By looking at conscious and unconscious phenomena, including feelings and thoughts, brain function, emotions, personality, and human development, psychology intersects the boundaries between the natural and social sciences.

The BA (Hons) Psychology involves the scientific interdisciplinary study of human behaviour, based on the assumption that brain activity underlies phenomena such as perception, cognition, emotions, personality, interpersonal relationships.

Psychology is both an academic discipline and an applied science; it deals with everyday issues and attempts to understand and treat mental health problems.

The psychology curriculum explores the biological, cognitive, and psychosocial areas of contemporary scientific psychology.

This degree programme combines a rigorous psychology syllabus with a personalised elective pathway, enabling you to deepen focus in your degree subject or explore a broad range of other subjects, developing agile thinking across disciplinary boundaries.

As well as dealing with the analysis of human behaviours, this degree equips you with critical thinking skills, and communication and problem solving capabilities that are highly prized in the evolving employment market. These valuable and transferable skills open up a wide array of career possibilities upon graduation.

INDICATIVE COURSES*

YEAR 1

- Foundations of Psychology
- Biological Bases of Human and Animal Behaviour
- Developmental Psychology: The human being across the lifespan
- Structure and Function of the Human Brain
- Plus, **FOUR** elective courses (see page 20)

YEAR 2

(Option to study abroad and follow US curriculum courses at a Northeastern University campus in the USA in the second semester)

- Cognitive Psychology
- Experimental Psychology
- Psychology of Individual Differences
- Social Psychology: groups and intergroup dynamics
- Plus, **FOUR** elective courses (see page 20)

YEAR 3

- Clinical Psychology
- Research Review in Psychology
- Plus, **FOUR** elective courses (see page 20)
- Final Project (Psychology)

* The list of courses above is indicative of those that are currently planned for students commencing their undergraduate degree in September 2024, and is subject to approval. The courses that run in each academic year are subject to change in line with faculty availability and student demand, and may have limited capacity or be unavailable to you due to the timetable. There is, therefore, no guarantee every course will be available every year.

* The list of courses above is indicative of those that are currently planned for students commencing their undergraduate degree in September 2024, and is subject to approval. The courses that run in each academic year are subject to change in line with faculty availability and student demand, and may have limited capacity or be unavailable to you due to the timetable. There is, therefore, no guarantee every course will be available every year.

Computer Science & Business BSc (Hons)

BSc (Hons) Computer Science and Business combines rigorous study of Computer Science and Business, with exploration at their intersections.

Computer science in this programme cultivates the knowledge, techniques, and tools to develop effective and secure computer software according to legal, ethical, and professional frameworks.

The Business part of the programme covers a wide range of fields and considers the advantages and disadvantages of different approaches, and the challenges businesses face to achieve the objectives of their stakeholders (shareholders, consumers, government, and wider society). Courses use case studies and examples from a wide range of business types (from entrepreneurs to global corporations), to understand the varying ways organisations can operate and be managed.

This degree programme combines a rigorous computer science and business syllabus with personalised elective courses.

Students gain programming and software development skills as well as critical thinking and analysis skills. They can also focus on innovation, marketing, and strategic analysis and decision-making. These valuable and transferable skills make them highly employable with a wide array of career opportunities.

INDICATIVE COURSES*

YEAR 1

Computer Science:

- Discrete Structures
- Fundamentals of Computer Science I
- Fundamentals of Computer Science II

Business:

- Introduction to Marketing
- Financial Accounting and Reporting
- Introduction to Economics

Plus, **TWO** elective courses (see page 20)

YEAR 2

(Option to study abroad and follow US curriculum courses at a Northeastern University campus in the USA in the second semester)

Computer Science:

- Object-oriented design
- Algorithms & Data
- Database Design

Business:

- People and Organisations
- Business Statistics
- Financial Management

Integrative:

- Management Information Systems

Plus **ONE** elective course (see page 20)

YEAR 3

Computer Science:

- Advanced Information Presentation & Visualisation
- Fundamentals of Software Engineering
- Large-scale Information Storage and Retrieval

Business:

- Strategic Analysis and Decision Making
- Supply Chain and Operations Management
- Fintech and Financial Innovation OR Innovation!

Integrative:

- Final Project (Business/Computer Science)

Award

Computer Science & Business BSc (Hons)

UCAS code

CS1B

Start date

2nd September 2024

Location

St Katharine Docks, London

Study abroad

Semester in USA (Optional)

Degree

awarding body
Northeastern University London

Study mode

Full-time

Duration

3 years

Annual tuition fees

Home: £9,250
International: £26,500

Entry requirements

AAB at A Level
35 points IB Diploma or the equivalent
Maths at C/4

Student satisfaction

83% (National Student Survey 2022)

Eligible for Double Degree

Yes

For full course details please visit our website

nulondon.ac.uk/computer-science-business

Award
Politics & Data Science BSc (Hons)

UCAS code

P3DS

Start date

2nd September 2024

Location

St Katharine Docks, London

Study abroad

Semester in USA (Optional)

Degree

awarding body
Northeastern University London

Study mode

Full-time

Duration

3 years

Annual tuition fees

Home: £9,250
International: £22,250

Entry requirements

AAB at A Level
35 points IB Diploma or the equivalent
Maths at C/4

Student satisfaction

83% (National Student Survey 2022)

Eligible for Double Degree

Yes

For full course details please visit our website

nulondon.ac.uk/politics-data-science

Politics & Data Science BSc (Hons)

BSc (Hons) Politics and Data Science combines rigorous study of Politics and Data Science, with exploration at their intersections.

Politics comprises: political science – analysing the organisation of government and society; political theory – examining normative questions, political ideas, and ideologies; and international relations – the only disciplinary field specifically concerned with international problems of war, peace, security, economy, globalisation, and the conflicting and cooperative engagement amongst states and between state and non-state actors.

Data Science focuses on the collection, storage, retrieval, and computational analysis of data in various forms and scales, covering key topics such as programming, machine learning and data mining, and information visualisation. The programme teaches the knowledge and techniques to program with data, learn from data, interpret, and visualise it in a way that solves real-world problems.

This degree programme combines a rigorous politics and data science syllabus with personalised elective courses.

This undergraduate degree equips students with a combination of technical data science skills, and a broad range of knowledge relevant to institutional decision – and policy making, the ability to manage complex information flows and networks. These valuable and transferable skills open a wide array of career possibilities upon graduation.

INDICATIVE COURSES*

YEAR 1

Politics:

- Introduction to Politics and International Relations
- Comparative Politics
- International Relations in Practice

Data Science:

- Discrete Structures
 - Programming with Data
 - Intermediate Programming with Data
- Plus, **TWO** elective courses (see page 20)

YEAR 2

(Option to study abroad and follow US curriculum courses at a Northeastern University campus in the USA in the second semester)

Politics:

- The European Union in the World
- Societies in Transition
- Political Arguments in Action

Data Science:

- Advanced Programming with Data
- Foundations of Data Science
- Information Presentation and Visualisation

Integrative:

- Experimental Data Science Project
- Plus **ONE** elective course (see page 20)

YEAR 3

Politics:

- International Organisations
- Security Studies
- Sustainable Development

Data Science:

- Machine Learning and Data Mining I
- Machine Learning and Data Mining II
- Large-Scale Information Storage and Retrieval

Integrative:

- Final Project (Politics/Data Science)

* The list of courses above is indicative of those that are currently planned for students commencing their undergraduate degree in September 2024, and is subject to approval. The courses that run in each academic year are subject to change in line with faculty availability and student demand, and may have limited capacity or be unavailable to you due to the timetable. There is, therefore, no guarantee every course will be available every year.

* The list of courses above is indicative of those that are currently planned for students commencing their undergraduate degree in September 2024, and is subject to approval. The courses that run in each academic year are subject to change in line with faculty availability and student demand, and may have limited capacity or be unavailable to you due to the timetable. There is, therefore, no guarantee every course will be available every year.

Philosophy & Computer Science BSc (Hons)

BSc (Hons) Philosophy & Computer Science combines study of Philosophy and Computer Science, with exploration at their intersections.

The Philosophy part of the programme explores central questions, arguments, theories and texts concerning the world and our place within it, developing rigour and clarity in thinking and writing. It examines fundamental questions about the nature of reality, what we can know, and how we should act.

The Computer Science part of the programme cultivates the knowledge, techniques, and tools to develop effective and secure computer software according to legal, ethical, and professional frameworks. Students study fundamentals of programme design including object-oriented design, software development, computer organisation, systems and networks, theory of computation, principles of languages, and advanced algorithms and data.

This degree programme combines a rigorous philosophy and computer science syllabus with personalised elective courses.

INDICATIVE COURSES*

YEAR 1

Computer Science:

- Discrete Structures
- Fundamentals of Computer Science I
- Fundamentals of Computer Science II

Philosophy:

- Introduction to Philosophy
- Introduction to Logic
- Technology and Human Values

Plus **TWO** elective courses (see page 20)

YEAR 2

(Option to study abroad and follow US curriculum courses at a Northeastern University campus in the USA in the second semester)

Computer Science:

- Object-Oriented Design
- Algorithms and Data
- Database Design

Philosophy:

- Ancient Philosophy

Plus **TWO** other Philosophy courses from the University Courses list, at least **ONE** of which is in theoretical philosophy

Integrative:

- AI and Data Ethics

Plus **ONE** elective course (see page 20)

YEAR 3

Computer Science:

- Fundamentals of Software Engineering
- **TWO** additional courses from this list:
 - Advanced Information Presentation and Visualisation
 - Large-Scale Information Storage and Retrieval
 - Machine Learning and Data Mining I
 - Machine Learning and Data Mining II
 - Human Computer Interaction

Philosophy:

- Philosophy of Logic and Language
- Plus **TWO** other Philosophy courses from the University Courses list

Integrative:

- Final Project (Philosophy/Computer Science)

Award

Philosophy & Computer Science BSc (Hons)

UCAS code

P1C5

Start date

2nd September 2024

Location

St Katharine Docks, London

Study abroad

Semester in USA (Optional)

Degree

awarding body

Northeastern University London

Study mode

Full-time

Duration

3 years

Annual tuition fees

Home: £9,250
International: £26,500

Entry requirements

AAB at A Level
35 points IB Diploma or the equivalent
Maths at C/4

Student satisfaction

83% (National Student Survey 2022)

Eligible for

Double Degree

Yes

For full course details please visit our website nulondon.ac.uk/philosophy-computer-science

Award

Applied Digital & Technology Solutions BSc (Hons)

UCAS code

DT1S

Start date

January 2024
April 2024
September 2024

Location

Online

Degree

awarding body
Northeastern University London

Study mode

Flexible Part-Time

Duration

3 years

Annual tuition fees

Home: £9,250
International: £9,250 (online)

Entry requirements

BBB at A level or the equivalent

Eligible for

Double Degree

No

Elective course options available

No

For full course details please visit our website

nulondon.ac.uk/applied-digital

Applied Digital & Technology Solutions BSc (Hons)

Our Tech-Industry Gold accredited BSc (Hons) Applied Digital & Technology Solutions degree programme equips you with the technical expertise to develop innovative digital and technology solutions and to get you ahead of the competition for a successful career in the endless range of sectors and organisations recruiting individuals with technological expertise.

This online programme is invaluable for anyone wishing to upskill or enter a role within digital and technology services. You will have the opportunity to specialise and customise your programmes of studies towards a career as an IT Consultant or a Data Analyst.

Students will learn how to successfully deliver technology-enabled solutions in a range of areas, including software, business and systems analysis, cybersecurity, data analysis and network infrastructure.

Our varied curriculum is designed in partnership with ServiceNow, a global leader in cloud-based workflow automation and business transformation that powers the digital transformation initiatives of over 6,200 organisations worldwide.

Embedded ServiceNow training helps you to build the essential skills that fuel new product development, increase productivity and drive digital transformation.

COMPULSORY COURSES

YEAR 1

- Business Fundamentals
- Intensive Foundations of Computer Science and Programming I
- Mathematical Structures and Methods
- Data Management Systems
- Database Design and Management I
- Intensive Foundations of Computer Science and Programming II
- Digital Fluency in the Artificial Intelligence-Enabled Enterprise

YEAR 2

- IT Project Management
- Database Design & Management II
- Data Analytics
- Cybersecurity
- IT Service Management
- Visual Communication of Information
- Data Visualisation
- Network and Platform Technologies

YEAR 3

Select ONE specialism

IT Consultant Specialism

- Consulting Fundamentals and Frameworks
- Customer Lifecycle Management
- Advanced Information Technology Service Management
- Business and Change Management
- DTSP Synoptic Project

Data Analyst Specialism

- Data Driven Decision Making I
- Data Driven Decision Making II
- Predictive Analytics in Python
- Implementing Data Science
- DTSP Synoptic Project

* The list of courses above is indicative of those that are currently planned for students commencing their undergraduate degree in September 2024, and is subject to approval. The courses that run in each academic year are subject to change in line with faculty availability and student demand, and may have limited capacity or be unavailable to you due to the timetable. There is, therefore, no guarantee every course will be available every year.

* The list of courses above is indicative of those that are currently planned for students commencing their undergraduate degree in September 2024, and is subject to approval. The courses that run in each academic year are subject to change in line with faculty availability and student demand, and may have limited capacity or be unavailable to you due to the timetable. There is, therefore, no guarantee every course will be available every year.

Interdisciplinary Study

NU London degree programmes offer you the opportunity to create your own bespoke programme of study with your personal choice of elective courses* studied alongside your main degree subject.

You can choose to deepen your focus in your degree subject or explore a broader range of other subjects, developing agile thinking across disciplinary boundaries

PERSONAL ACADEMIC ADVISERS

Your academic adviser will be on hand throughout your studies to help you to select the specific elective courses or pathways that will suit your interests, aptitudes and aspirations.

WHAT IS AN ELECTIVE?

Electives provide students with the opportunity to create a bespoke programme of studies. Students can choose to use their electives to delve further into their degree subject(s) or to expand into wider interdisciplinary areas.

All courses on the University Course List are available as electives, subject to timetable, pre-requisites, and availability.

ELECTIVE COURSE SUBJECTS

Art & Design
Anthropology
Business
Biology
Chemistry
Communications
Computer Science
Creative Writing
Data Science
Economics
Engineering
English
History
Interdisciplinary
Languages
Law
Maths
Philosophy
Physics
Politics & IR
Psychology
Sociology

* Please refer to the degree programme pages for detailed information about required and elective courses.

The list of elective course subjects above is indicative of those that are currently planned for students commencing their undergraduate degree in September 2024, and is subject to approval.

Global Experience

By coming to study at Northeastern University London you have the opportunity to embrace a global mindset from day one, integrating yourself into our diverse international community, with students from across Northeastern University's Global Campus Network sharing our Devon House campus.

Northeastern University London offers students exciting global experience opportunities.

SEMESTER ABROAD

Our exciting undergraduate degree programmes offer you the opportunity to gain international study experience with a Semester Abroad studying at one of Northeastern University's campuses in the USA, which include Boston, Massachusetts and Oakland, California.

You'll enjoy a once-in-a-lifetime experience, which includes opportunities to expand your horizons and network, engage with another culture, develop your independence, and experience learning in a different style and environment.

DOUBLE DEGREE*

In addition to three year UK degree programmes, Northeastern University London offers unique and exciting opportunities for students to study for two globally recognised degrees simultaneously over four years, a UK undergraduate degree awarded by Northeastern University London, and a US bachelor's degree awarded by Northeastern University (Boston, MA). Double degree students undertake their fourth year of study in the USA.

There are also options to study for a UK undergraduate degree and a US Masters degree over just four years, or a UK undergraduate degree and UK masters degree.

ALUMNI POSTGRADUATE STUDY FEE DISCOUNTS

UK masters degree fees – 20% NU London Alumni Discount.

US masters degree fees – 25% Double Husky Scholarship.

POST STUDY WORK VISAS

Depending on whether you choose to spend your final year in the United Kingdom or the United States, students may be eligible for Post Study Work Visas in the United Kingdom or Optional Practical Training (OPT) in the United States.

* Northeastern University tuition fees and programme fees are payable for a fourth year of study in Boston, Oakland or any other North American campus.

Degree programme options

THREE YEAR UK UNDERGRADUATE DEGREE

YEAR 1	LOCATION
Autumn Semester	London
Spring Semester	London
YEAR 2	LOCATION
Autumn Semester	London
Spring Semester	London, Boston or Oakland
YEAR 3	LOCATION
Autumn Semester	London
Spring Semester	London

UK undergraduate degree awarded by Northeastern University London

FOUR YEAR UK & US UNDERGRADUATE DEGREES

YEAR 1	LOCATION
Autumn Semester	London
Spring Semester	London
YEAR 2	LOCATION
Autumn Semester	London
Spring Semester	London, Boston or Oakland
YEAR 3	LOCATION
Autumn Semester	London
Spring Semester	London

UK undergraduate degree awarded by Northeastern University London

YEAR 4	LOCATION
Autumn Semester	Boston/Oakland/Online
Spring Semester	Boston/Oakland/Online

US bachelor degree awarded by Northeastern University

Northeastern University tuition fees and programme fees are payable for a fourth year of study in Boston, Oakland or any other North American campus.

FOUR YEAR UK UNDERGRADUATE & UK MASTERS DEGREE

YEAR 1	LOCATION
Autumn Semester	London
Spring Semester	London
YEAR 2	LOCATION
Autumn Semester	London
Spring Semester	London
YEAR 3	LOCATION
Autumn Semester	London
Spring Semester	London

UK undergraduate degree awarded by Northeastern University London

YEAR 4	LOCATION
Autumn Semester	London
Spring Semester	London

UK masters degree awarded by Northeastern University London

FOUR YEAR UK UNDERGRADUATE & US MASTERS DEGREE

YEAR 1	LOCATION
Autumn Semester	London
Spring Semester	London
YEAR 2	LOCATION
Autumn Semester	London
Spring Semester	London, Boston or Oakland
YEAR 3	LOCATION
Autumn Semester	London
Spring Semester	London

UK undergraduate degree awarded by Northeastern University London

YEAR 4	LOCATION
Autumn Semester	Boston/Oakland
Spring Semester	Boston/Oakland

US masters degree awarded by Northeastern University

Northeastern University tuition fees and programme fees are payable for a fourth year of study in Boston, Oakland or any other North American campus.



Study abroad

Northeastern University London undergraduate degree programmes offer students flexible, exciting, and immersive international study opportunities.

All Northeastern University London undergraduate degree programmes (except online degrees) offer students the opportunity to spend at least one semester studying at a Northeastern University campus in the USA.

Studying abroad opens a wide range of opportunities for personal growth combined with academic, professional, and cultural experiences, while expanding students' global networks and providing increased work and experiential learning opportunities.

You'll enjoy studying at one of Northeastern University's global campuses where you'll be fully immersed in American culture and learn from a US curriculum, whilst being part of a diverse and international student body.

Northeastern University London undergraduate degree programmes offer students flexible, exciting, and immersive international study opportunities.

All Northeastern University London undergraduate degree programmes (except online degrees) offer students the opportunity to spend at least one semester studying at a Northeastern University campus in the USA.

Studying abroad opens a wide range of opportunities for personal growth combined with academic, professional, and cultural experiences, while expanding students' global networks and providing increased work and experiential learning opportunities.

AUTUMN SEMESTER 2024*

Semester commences
2nd September 2024

Semester ends
13th December 2024

*Subject to confirmation

Your learning experience

You will experience face-to-face teaching through a combination of formats and class sizes. Some of our courses are delivered through a high number of scheduled teaching or contact hours, while others focus on smaller, more personalised, guided independent study, or hands-on or community- or industry-engaged projects.

Whether you are on a course with high numbers of interactive lecture or seminar hours, or more guided independent learning, your teaching will typically take place in smaller groups than at many other UK universities. Most lectures and seminars in our new degrees will have a maximum of 40 student participants, while tutorials will typically have five or fewer students, and may include one-to-one tutorials. This personalised approach to teaching allows everyone to participate and thrive.

Our academic faculty selects the most appropriate pedagogy and contact hours for each individual course in order to support students to develop and succeed in their studies. This means that, within your undergraduate degree, you are likely to experience a combination of scheduled lectures, workshops, seminars and tutorials. The exact balance of these types of learning and number of contact hours will depend on the specific elective courses you choose.

YOUR ASSESSMENTS

During your studies you will be assessed through a diverse repertoire of authentic, inclusive, and personalised assessments.

In line with our commitment to experiential learning, our assessment strategy prioritises the application of knowledge and skills in new contexts, thus engaging you in and preparing you for citizenship and employment. You can expect our assessments to engage with your interests, aspirations, and goals, as well as providing you with opportunities to develop and hone key knowledge and skills.

Current assessment modes across the University include: portfolio, simulation or role play, group work, set exercises, written coursework, open and closed book exams, and presentations.

We believe that assessments are a tool for learning, not only a measure of learning, and whether your assessment is formative or summative, you will receive valuable feedback motivating you to continue learning.



Preparing for your career as you study

Core competencies are embedded within our degree programmes, so that you stand out from the crowd and are ready to succeed as soon as you graduate.

CORE COMPETENCIES

By the time you graduate, you will have taken courses with the following three attributes:

1. Writing Across Audiences and Genres
2. Integrating Knowledge and Skills Through Experience
3. Demonstrating Thought and Action in a Final Project.

You will also have taken courses with at least FOUR of these attributes, depending on your individual learning pathway:

- Engaging with the Natural and Designed World
- Exploring Creative Expression and Innovation
- Interpreting Culture
- Conducting Formal and Quantitative Reasoning
- Understanding Societies and Institutions
- Analysing and Using Data
- Engaging Differences and Diversity
- Employing Ethical Reasoning

Experiential opportunities that are credit-bearing and co-designed and/or co-delivered with partners in government, industry, community, research, and education, will offer the possibility of gaining real-world and international experience, while working towards your degree.



State-of-the art campus

Our campus in St Katharine Docks offers vibrant and impressive state-of-the-art facilities for students and staff.

The innovative and modifiable space includes classrooms, tutorial rooms, seminar and event spaces, as well as communal social areas, and quiet study spaces with WIFI throughout the building. There are also coffee and tea areas, study pods, showers, multi-faith rooms, and support rooms

The ground floor hub space offers an integrated bar for student and university events, games tables (pool, table tennis, and foosball) and comfortable and sociable seating areas.

STUDY IN THE HEART OF LONDON

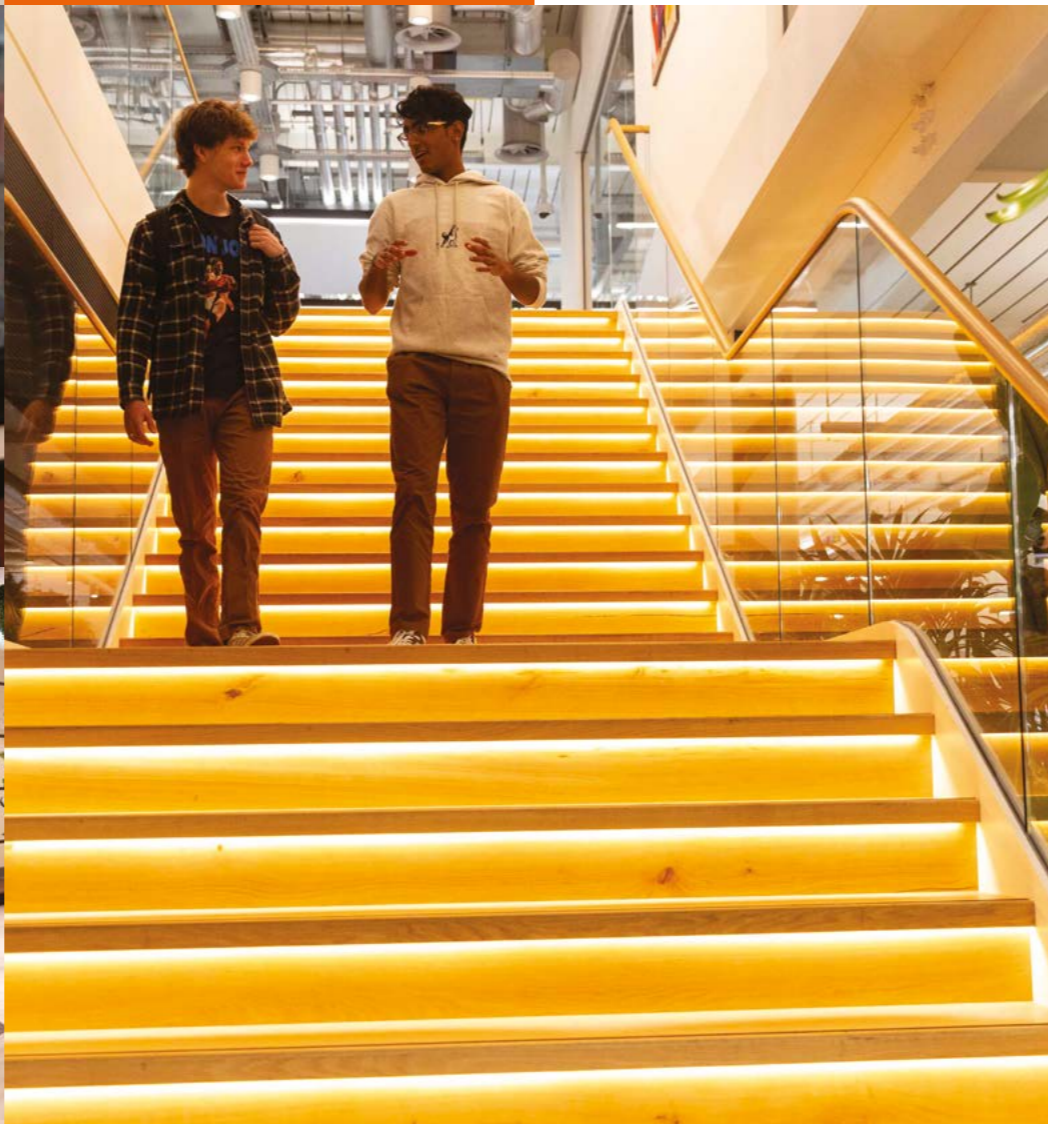
Devon House is situated at the heart of historic St Katharine Docks, just a few minutes' walk from the Tower of London and Tower Bridge and enjoys stunning river views with terraces and open areas surrounded by dozens of restaurants, cafes, bars, and a leisure marina, all part of a dynamic waterside setting.

Our location is also right on the doorstep of the City, London's Central Business District, a worldwide centre for commerce. Home to the Stock Exchange and the Bank of England, as well as finance and commerce sectors, the law profession, cultural organisations, creative industries, tech companies and start-ups. The City offers a wide range of opportunities for work experience, internships, and part-time student employment.

ACCESSIBLE CAMPUS

The entire campus is extremely welcoming to all, with excellent accessibility and support, including lifts, wide entry points, adaptable furniture, and hearing loops. Our ventilation and air-filtration system is similar to those used in hospital settings providing enhanced protection for our community.

The University is also just minutes from the booming East London Tech City, a cluster of high-tech companies and web businesses.



Our sustainable campus

Campus Environmental Initiatives

- Furniture and joinery sourced from local UK manufacturers, keeping our carbon footprint as low as possible.
- Wall panel fabrics created entirely from post-consumer recycled plastic from the SEAQUAL INITIATIVE, designed to combat marine plastic pollution and achieve a waste free environment.
- Classroom flooring is carbon neutral across its lifespan with more than 80% recycled and bio-based content.
- All pinnable surfaces consist of 91% natural materials and are manufactured solely using renewable energy sources.
- Reducing our environmental impact with intelligent lighting control systems.
- Campus recycling programme aims to recycling 100% of the building's waste.



Libraries & study spaces

University students have access to the following libraries

NORTHEASTERN UNIVERSITY LIBRARY

Students have full access to the digital resources available from Northeastern University's Library. Northeastern leads the way in redefining library service in the 21st century. Resources include over 800,000 e-books and over 100,000 electronic journals. The library provides the resources and services which enable students to ignite interests, spark creativity, and forge new discoveries. The library is available 24/7 so students can study whenever it suits them.

BRITISH LIBRARY

The British Library is the national library of the United Kingdom and gives access to the world's most comprehensive research collection. The library provides information services to academic, business, research, and scientific communities. Students can browse the collection of over 170 million items including artifacts from every age of written civilisation. The library also keeps the nation's archive of printed and digital publications, adding around three million new items to the collection every year.

The British Library is a brilliant place for research, inspiration, and enjoyment. There are open spaces available to all and reading rooms accessible to those who have a free reader pass.

www.bl.uk/visit/reading-rooms

CITY OF LONDON LIBRARIES

Students have full membership access to the City of London's lending libraries at the Barbican Centre, Shoe Lane and Artizan Street. Facilities offered at these libraries include study space, wifi, printing, book borrowing privileges and access to digital resources. In addition, access can be requested to the CoL research libraries – Guildhall Library and the London Metropolitan Archives.

WESTLAW AND LEXISNEXIS

Students on the Law course have full access to the most up-to-date law reports, case law, legislation, journal articles and more through the Westlaw and LexisNexis online legal databases.



For more information please refer to our widening participation section on our website: nulondon.ac.uk/aspiring-students



Widening participation

We recognise the importance of having a student body at NU London that reflects the diversity represented across wider society.

We understand that there can be barriers that may impede students from pursuing their university career, and therefore we aim to provide support in order to admit the brightest and best students regardless of their background.

CONTEXTUAL OFFERS

When we review applications we take into consideration a number of socio-economic factors, school performance data, and other pieces of information for UK applicants. We give additional consideration to students from specific widening participation groups. This is to recognise the potential of talented students from all backgrounds.

If a candidate meets certain eligibility criteria, we may make an offer lower than our typical entry requirements that recognises the potential of students whose personal circumstances may have restricted achievement at school or college. This is called contextualised admissions.

For more information please refer to our widening participation section on our website: nulondon.ac.uk/aspiring-students

SUPPORT AS YOU PREPARE TO START UNIVERSITY

Preparing to start university is an exciting time, but we know that it can also sometimes be challenging and that prospective students may have lots of questions.

Every widening participation student who receives an offer to study at NU London is given a personal admissions team contact who will offer advice and support in the lead up to starting university including how to apply for Student Finance, choosing accommodation, answering questions about degree courses and studying at Northeastern University London, as well as student life in London generally.

BURSARIES

We are committed to providing support to students who require financial assistance to study.

Means tested bursaries can be used to help with living costs, to pay for accommodation, or to help with tuition fees.

Find out more at nulondon.ac.uk/home-fees



International students

Northeastern University London attracts students from all over the world, and we welcome the different perspectives and experiences that students from diverse countries and backgrounds can bring.

London is one of the best and the most multicultural cities in the world. By coming to study at Northeastern University London you will join a community of NU London students who come from around the world. Our team of expert advisors is here to support and guide you every step of the way.

UK STUDENT VISA

In order to study in the United Kingdom international students may require a visa. If you are an international student who is coming to Northeastern University London to study a programme that is longer than 6 months, you must apply for a Student Visa before coming to the UK. This visa has replaced the Tier 4 visa.

Northeastern University London is licensed by the UK government to sponsor your visa application for all of our programmes.

We know that visa applications can be complicated and daunting, so we have a dedicated Visa Compliance Team at the University who are on-hand to help you through the visa process.

For the most up-to-date information please visit our [website: nulondon.ac.uk/visas](https://www.nulondon.ac.uk/visas)

WORKING RIGHTS FOR INTERNATIONAL STUDENTS WHILST STUDYING

International students studying a full time programme at the University will be able to work part-time (max 20 hours) during term-time and full-time during holidays.

ENGLISH LANGUAGE REQUIREMENTS

If English is not your native language, you will need to demonstrate proficiency in English in order to study at the University. Students must have a good command of English and be able to communicate in an academic environment.

Applicants who have taken higher-level English as part of their secondary school examinations may be exempt from completing an additional English test. Applicants who have been educated full-time in the medium of the English language in the past two years to obtain, for example, A-levels, may also be exempt from additional requirements.

For further information and full details of the English tests we consider, please see our [website: nulondon.ac.uk/entry-requirements](https://www.nulondon.ac.uk/entry-requirements)



Careers support

Our dedicated Careers Advisors work with students from their first year to identify and support career goals and ambitions. Some students arrive at the University with their career path clearly mapped, others need help finding their direction. Our Advisors are here to help both.

Advisors will help to identify aspirations and explore careers, to develop a personal narrative and plan for personal and professional experiences that make Northeastern University London's students compelling candidates.

Our careers support is designed to teach students how to succeed in the different aspects of marketing themselves to potential employers, from initial application form to final interview.

Our Advisors are here to help you achieve your ambition and have expertise in a wide range of sectors including professional services, government, creative industries, law, and banking.

ALUMNI & NETWORK OPPORTUNITIES

We're proud to be at the heart of a community of brilliant, entrepreneurial, and enthusiastic graduates, academics, and professionals who make up the University's alumni.

Career events offer opportunities to network with alumni and industry professionals across a range of organisations and sectors, where students can share their aspirations and make real connections with individuals.



Student Support and Development

The Student Support and Development team are here to help students manage the ups and downs of life at university.

The team specialises in supporting students through a wide range of practical issues, including

- Understanding student finance & student loans
- Money advice and budgeting
- Support for independent, care-experienced and estranged students
- Navigating the Disabled Students' Allowance (DSA) and advice and support to offer holders wanting to apply for DSA
- Provide help and advice to students experiencing a wellbeing issue
- Help for students with short-term physical issues, e.g. broken arm
- Mental health and wellbeing

LEARNING SUPPORT PLANS

Learning Support Plans (LSP) are available for any student with a disability or difference, for example a specific learning difficulty, medical condition, neurological differences or mental health difficulties.

SUPPORT FOR MENTAL HEALTH AND WELLBEING

Our team is trained and experienced and are on hand to offer support to students experiencing poor mental health, whether it is a diagnosed mental health condition or new feelings of being low, anxious or distressed. The Student Mental Health Advisors can help students to manage their mental wellbeing, help navigate NHS services and provide referrals to counselling or coaching.

24 HOUR SUPPORT

Students at the University have access to Spectrum Life Student Assistance Programme (SAP). The SAP has a 24/7 helpline that gives in-the-moment support to students who are struggling and need assistance out of hours. Spectrum Life also hosts a platform and App to support mental and physical wellbeing and includes healthy recipes, fitness videos, podcasts, meditations, etc which students can use freely.

MENTAL HEALTH CHARTER PROGRAMME

The University has joined the Student Minds Mental Health Charter Programme, demonstrating our commitment to developing a whole-institution approach to mental health and wellbeing and creating cultural change on our campus.

Our extraordinary graduates

The outstanding achievements of our graduates, year on year, prove that our unique curriculum produces young people who not only have an excellent degree, but who are also highly desirable in the graduate recruitment market and well-prepared to make the transition from university to the world of work.

Equally, many of our graduates have used their degree as a springboard to progress to postgraduate study at some of the world's other top universities.

Our graduates are employed in a range of roles in national and international companies, including finance, technology, media, consulting, health, government, creative industries, law, social enterprises, and charities.

As well as graduates who choose to follow corporate career paths, some students are entrepreneurial and combine the skills they have acquired with their energy and passion, electing to join start-ups, as well as launching their own.

94%

of 2020 undergraduate leavers were in work and/or further study 15 months after graduating.

*Graduate Outcomes Data 2021



Our graduates' destinations and internships

CREATIVE INDUSTRIES & POLICY

Amnesty International
BBC
Belarus Free Theatre
Bloomberg
Byte London
Civil Service Fast Stream
Corke Willis
Department of Secretary of State for Wales
Diplomatic Fast Stream
Disney
elements.cloud
Enders Analysis
Fat Macy's
Fondazione Nuove Flore
Give Me Tap
Gravity Road
Grey Advertising
Hanover
HarperCollins
Haus Publishing
Imperial War Museum
Institute of Economic Affairs
Institute of Art and Ideas
INTO University
M&C Saatchi
Maher Bird Associates LLP
Ocado
Ogilvy
Orion Publishing
PHD Media
Pitch It
PS Live
Rare
Reform
Shelter
Sotheby's
Step Up
TBWA
Teach First
Time Inc
The British Council
The Daily Mail
The Daily Telegraph
The European Commission
The Ginko Library
The Good Schools Guide
The Sunday Times
The Week
UK Government department for Exiting the EU
UN - International Maritime Organisation
Universal
Warner Music
Winslow Hall Opera
Young & Rubicam
Yourzine

PROFESSIONAL SERVICES & FINANCE

Accenture
Allen & Overy
Amazon
Aviva
Axa Investments
Baker & MacKenzie
Barclays
BDO
Bearing Point
Cannaccord Genuity
CBRE
Clifford Chance
Debenhams
Deloitte
Deutsche Bank
Diageo
DLA Piper
Econovision
Eden McCallum
Freshfields
Bruckhaus Derringer
Glennmont Partners
Government Legal Department
Grant Thornton
Harcus Sinclair
Hogan Lovells
JP Morgan
Julius Baer
Kleinwort Benson
KPMG
Lambert Smith Hampton
Moore Stephens
MSB Consultancy
National Bank of Greece
Norton Rose Fullbright
OC & C Strategy Consultants
PwC
Santander
Shearman & Sterling
Slater & Gordon
Slaughter & May
The Fine Art Fund Group
The Grange Group
Travellex

POSTGRADUATE

Birkbeck
City University
Columbia University
King's College London
London School of Economics & Political Science
St Andrews University
The Courtauld
Institute of Art
The New School, NY
University College London
University of Cambridge
University of Chicago
University of Oxford



Living the London Life

London is home to world-class academic institutions, research libraries, archives, galleries, theatres, and museums. You'll find everything you need to enrich your academic studies and bring your degree to life with London as an extension to your classroom.

You'll also experience living in one of the most dynamic and diverse cities in the world! No matter what your interests or what you want to get out of London, there is always something to do or somewhere to be, from art galleries and museums, theatres, and historical sites, to clubs, restaurants and bars, vibrant food markets, world-famous shopping streets, spectacular parkland, world-class sport, and even boating on the Thames.

For some students, the thought of studying in a vast city like London may be daunting, but at Northeastern University London you will enjoy the best of both worlds: a supportive, friendly community with excellent pastoral care in the bustling heart of London.

Whether you want to see your favourite band perform, visit a world-famous gallery, or have a great night out, there is always something to do and people to do it with.

ADVANCE YOUR ACADEMIC JOURNEY IN THE BEST STUDENT CITY IN THE WORLD

London has been awarded the best student city in the world for 2023 by QS, the world's leading provider of services, analytics, and insight to the global higher education sector.

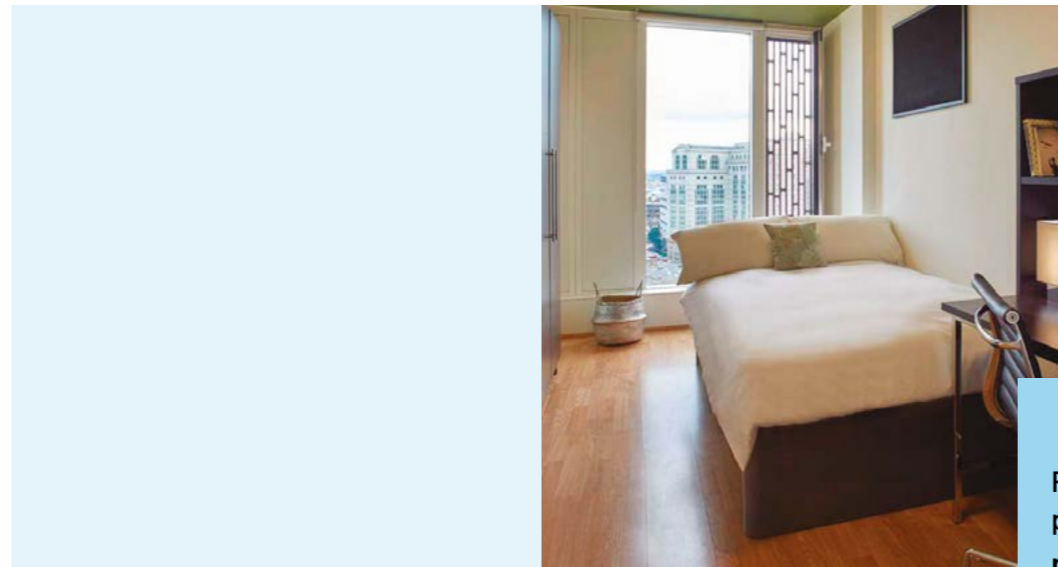
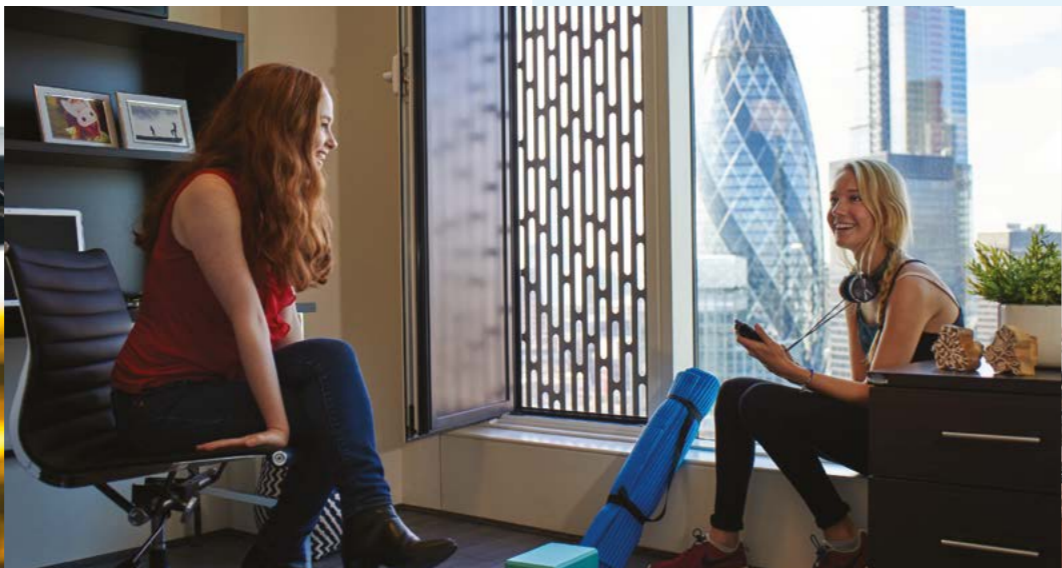


Student Union

The Student Union (SU) is a student-led organisation at the heart of your NU London experience.

The SU exists to promote the interests of the student body, campaigning, lobbying, and advocating for student issues, as well as planning social and extracurricular activities and providing support to student clubs and societies.

Whatever your passion – art, music, sport, theatre, performing arts, creative writing, politics, or playwriting to playing poker or sharing your appreciation of craft beer – you can get involved in bringing it to life through the SU.



Accommodation

The University's partner accommodation providers offer a range of housing options to reflect all budgets. All our recommended halls have excellent security features, comfortable bedrooms and communal areas, and are a short commute from the University.

You'll find that living alongside fellow students from NU London when you start your degree is a great way to make friends and to get your bearings in London.

Some of our recommended halls have NU London Resident Life Co-ordinators living onsite. RLCs support our students with their accommodation and arrange a wide range of social activities and entertainment.

Our recommended halls offer a great opportunity to meet and mix with students studying a huge variety of subjects at other London universities, giving you the halls accommodation experience of a large university.

Some students also choose to live at home or to rent privately and share a flat with friends.

For full information please check online: nulondon.ac.uk/accommodation



How to apply

1. CHOOSE YOUR DEGREE

2. SUBMIT YOUR APPLICATION

You can apply to the university as one of your five choices through UCAS.

Our institution code is **N53** and the institution name is **Northeastern University London**.

Or, if you are only applying to Northeastern University London, you can apply to us directly via nulondon.ac.uk.

We accept direct applications on a rolling basis, so you can apply before or after the UCAS deadline.

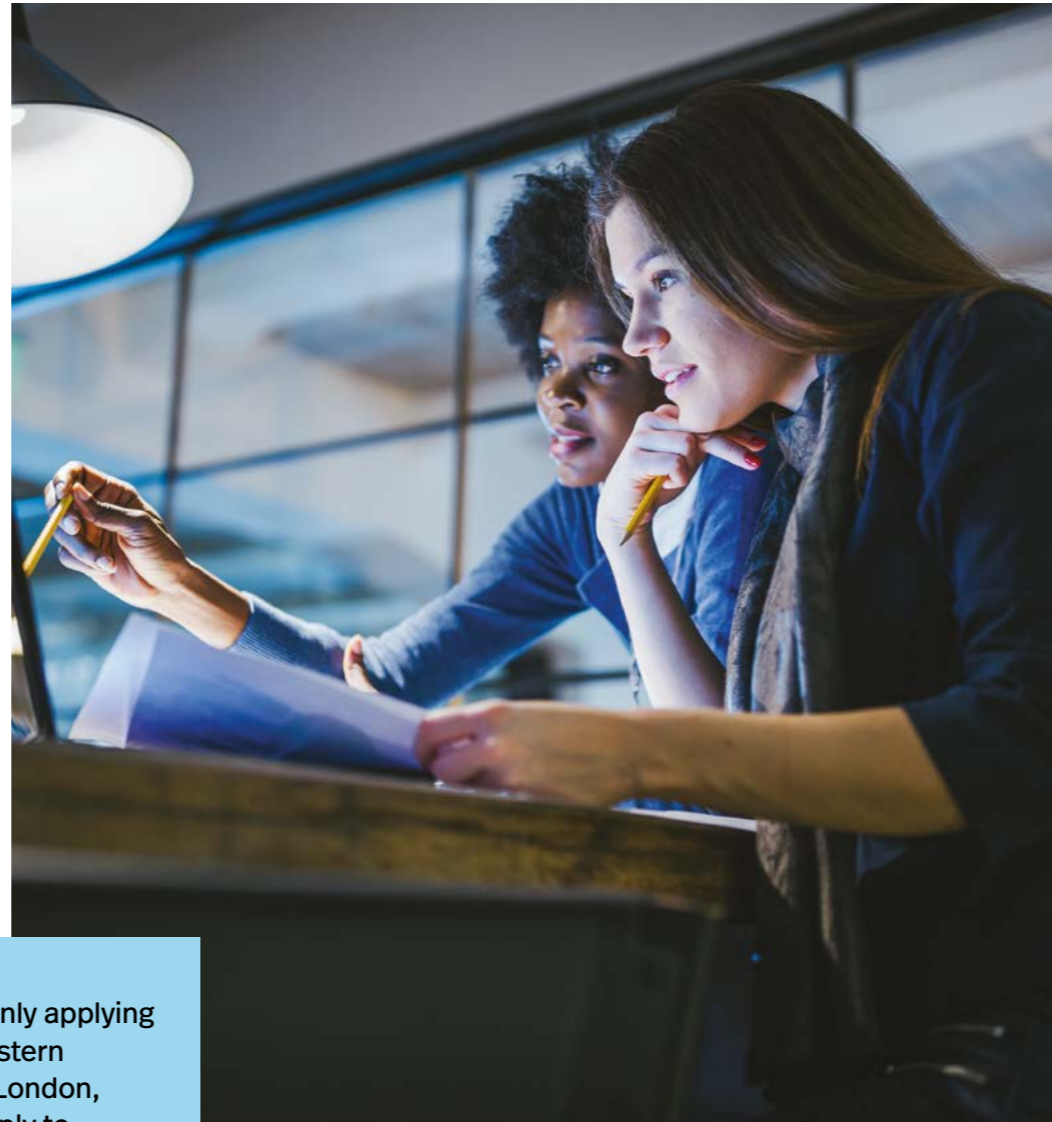
We also accept applications via the CommonApp.

3. NORTHEASTERN UNIVERSITY LONDON APPLICATIONS

All applications to the University are carefully considered by our admissions tutors. Applicants may be invited to an interview, which will take place via Zoom.

4. OFFERS

If we make you an offer, a formal offer pack will be sent out to you.



If you are only applying to Northeastern University London, you can apply to us directly via nulondon.ac.uk

Entry requirements

Students will need to be 18 years of age on the 1st September in the year of entry.

TYPICAL ENTRY REQUIREMENTS

A-levels: AAB. A-level General Studies, Critical Thinking, Thinking Skills and Global Perspectives are not accepted as one of your A-levels. We normally also do not accept native language A-levels. Students studying the Extended Project Qualification (EPQ) alongside three A-levels may be eligible for an alternative offer.

IB: 35 points overall or alternatively 6,6,5 in HL subjects (with an overall pass). The overall score of 35 points includes the TOK and the Extended Essay.

Equivalences for other UK and international qualifications, please see: nulondon.ac.uk/entry-requirements



This document is prepared ahead of the academic period to which it relates to provide potential students with an overview of the programmes for which they are applying. As a result, there may be infrequent occasions when the University is unable to offer individual courses, degree programmes, or services described herein. Furthermore, the University reserves the right to withdraw individual courses or degree programmes where there is an insufficient number of applications or confirmed students to make the course viable.

On such occasions, students will be informed of changes within a reasonable timescale and another individual course or degree programme will be offered, which will have equal academic benefit to the course or degree programme originally described.

From time to time, individual faculty members may stop teaching at the University. In such instances, the University will undertake reasonable endeavours to ensure that students are taught by another academic with an equivalent level of qualification, research interests, and experience.



Fees & funding

TUITION FEES FOR HOME STUDENTS

The tuition fees for September 2024 entry are £9,250 for home students.

TUITION FEES FOR INTERNATIONAL STUDENTS

Please see individual degree pages.

TUITION FEE LOANS

Home students starting their first undergraduate degree may be eligible to apply for a tuition fee loan.

To determine if you are entitled to a tuition fee loan, and how to apply, please visit [gov.uk/student-finance](https://www.gov.uk/student-finance)

There are funding agencies in the UK for England, Scotland, Wales and Northern Ireland, to which you should apply depending on your residency.

MAINTENANCE LOANS

Students who are resident and settled in England may be eligible for a maintenance loan from the Student Loans Company. The amount of loan you receive will vary according to your household income. For further details on maintenance loan amount and eligibility, please visit [gov.uk/student-finance](https://www.gov.uk/student-finance).

BURSARIES

Please note that only home fees students are eligible to apply for a means-tested bursary.

The university warmly welcomes students from all backgrounds, and we are committed to providing support to students who require financial assistance to study.

Bursaries can be used to help with living costs, to pay for accommodation, or to help with tuition fees. Find out more at nulondon.ac.uk/home-fees

EU STUDENTS

EU, EEA and Swiss citizens with settled status (or Indefinite Leave to Remain or permanent residency) who have been ordinarily resident in the UK or Islands for the three years immediately before the start of their course (unless the residency in the UK or Islands was mainly for the purpose of education) may be considered home students for tuition fees.

The UK and Ireland have agreed that students from Ireland will continue to have home fee status in the UK, under the arrangements of the Common Travel Area.

All information related to fees, loans, scholarships and bursaries is correct at the time of publication but may be subject to changes in UK government funding policy. Please visit nulondon.ac.uk/home-fees for up to date information. If you would like to discuss student finance, please contact us via info@nulondon.ac.uk.



Experience Northeastern University London for yourself, book your place at one of our events

nulondon.ac.uk/visit

Chat to our current students about life at University

nulondon.ac.uk/ambassadors



Devon House
58 St Katharine's Way
London E1W 1LP
United Kingdom

nulondon.ac.uk
info@nulondon.ac.uk
+44 (0)20 7637 4550

Follow us on social media to keep up to date with our latest news and find out more about student life at Northeastern University London



NortheasternLDN



Northeastern.LDN

N Northeastern University
London