



Welcome to Northeastern University London

Welcome

As you step foot onto our campus, you are entering a world of endless possibilities, where knowledge is waiting to be explored, friendships are waiting to be forged, and ambitions are waiting to be realised.

We take great pride in our diverse and inclusive community, which embraces individuals from all walks of life. Here, you will find a rich tapestry of cultures, perspectives, and experiences that will challenge your assumptions and broaden your horizons. It is through this diverse community that we foster an environment of intellectual curiosity, collaboration, and respect.

Our faculty members are not only experts in their respective fields but also dedicated mentors who are committed to guiding you through your academic journey. They will inspire you to think critically, question the status quo, and develop the skills necessary to navigate the complexities of the modern world. Be prepared to engage in thought-provoking discussions, participate in research, and embrace new ideas that will shape your understanding of the world around you.

University is a time of growth, both academically and personally. Challenge yourself to explore new subjects and discover new perspectives. This is your chance to shape your future, broaden your horizons, and unleash your full potential.

Remember, university is not just about acquiring knowledge but also about building relationships and lifelong connections. Build new friendships, collaborate with your peers, and engage with our dedicated alumni network, which spans the globe and can offer invaluable insights and support as you embark on your own professional journey.

As you commence this exciting chapter of your life, embrace the challenges that lie ahead with courage, curiosity, and determination. Trust in your abilities, seek guidance when needed, and never lose sight of your goals. The path may be challenging, but it is through facing these challenges that you will grow, evolve, and become the best version of yourself.



KEY DATES

MONDAY 8TH JANUARY

Welcome Week Starts

MONDAY 15TH JANUARY

Teaching starts

* Attendance at Welcome Week is compulsory



London Airport travel guide

Onward travel from London Airports to central London

Your arrival time and airport location in London will influence the cost and choices for your onward travel. We've created the following tables. Please note that while we aim for accuracy, Transport for London (TFL) might make changes.

London Heathrow Airport (LHR)

TAXI	PRICE	TIME
UBER	£70.00	1hr 20 mins
BLACK CAB	£114.00	1hr 20 mins

LONDON UNDERGROUND		
Elizabeth Line	£13.30	1hr

London Stansted (STN)

TAXI	PRICE	TIME
UBER	£80.00	1hr
BLACK CAB	£160.00	1hr 30 mins

PUBLIC TRANSPORT		
STEX Trains	£24.00	1hr 10 mins

London City Airport (LCY)

TAXI	PRICE	TIME
UBER	£28.00	25 mins
BLACK CAB	£28.00	25 mins

LONDON UNDERGROUND		
DLR (Docklands Light Railway)	£3.00	40 mins

London Luton Airport (LTN)

TAXI	PRICE	TIME
UBER	£75.00	1hr 30 mins
BLACK CAB	£160.00	1hr 30 mins

PUBLIC TRANSPORT		
Luton Dart Bus & Thameslink Train	£28.00	1hr 5 mins

London Gatwick (LGW)

TAXI	PRICE	TIME
UBER	£80.00	1hr 30 mins
BLACK CAB	£120.00	1hr 30 mins

PUBLIC TRANSPORT		
Thameslink Trains	£12.00	1hr

What to bring to University

MUST BRINGS



Passport and a photocopy of your passport



Copies of all visa documents including your Biometrics Residence Permit, if you have selected to collect it at a post office



Copies of health insurance and member ID card



Any medication, plus copies of medical records for pre-existing conditions



Glasses/contact lens prescriptions



Certificates for your academic qualifications relating to your offer to study



Comfortable shoes suitable for long walks



A raincoat and clothes for both warm and cold weather



A smart outfit for more formal NULondon events



Laptop or tablet to create and edit documents and access course materials online



A comfortable, sturdy bag which can fit your laptop



A couple of adaptor plugs for British sockets

DON'T BRING...

If you want to add to your room set up with any of the following items, you can easily order them online or pick them up once in London:

- Airfryer
- Toaster
- Kettle
- Fan
- Extension cord

Please note, you will have access to printers on campus in Devon House.

Due to the limited storage space within student accommodation, we recommend that no more than two suitcases are brought with you. We recommend firstly focusing on clothing that layers well and then on items of sentimental value.

We thankfully do not get extreme winter weather in the UK with even snowfall being a relatively rare occurrence.

Quick tips

- Don't leave packing to the last minute, give yourself time to prepare.
- Aim to travel light. University halls accommodation is compact with limited cupboard space.
- Shampoo, showergels, hair conditioners take up space and add weight, you can get them when you arrive.
- Make digital and paper copies of important documents and keep them together in a secure file.
- Making your bed should be your first priority, it could be a long few days at the beginning and you'll need plenty of sleep.
- Remember, there's no such thing as a silly question, you can ask us anything about transitioning into student life studentlife@nulondon.ac.uk



Welcome Week is an exciting and memorable experience designed to help you settle into university life, explore your campus, and get to know your fellow students.

During this week, you will have the chance to participate in a diverse range of activities, events, and social gatherings. It is an excellent opportunity to learn about the clubs, societies, and organisations available to you.

Dive in, explore, and discover the ones that resonate with you. Engaging in these extracurricular activities will not only enhance your university experience but also foster personal growth, leadership skills, and lifelong friendships.

The compulsory Welcome Week workshops and orientation sessions will provide essential information about academic programmes, support services, and campus policies.

These sessions are designed to ensure a smooth transition into university life and make the most of your academic journey.

Remember to embrace the excitement, open yourself to new experiences, and step outside of your comfort zone.

Lastly, take care of yourself and prioritise your well-being. University life can be demanding, but it is essential to find a healthy balance between your academic responsibilities and personal wellbeing.

Seek support from the University's Student Support and Development Team whenever you need assistance.

Once again, a warm welcome to Northeastern University London! It is an honour to have you as part of our vibrant university community. Enjoy every moment, make lasting connections, and enjoy the journey ahead.

We are here to support you every step of the way.

Welcome Week to do list

- ☐ Move in to accommodation
- ☐ Enrol at NU London
- ☐ Attend compulsory Welcome Week events
- ☐ Register with a GP
- ☐ Register with a Dentist
- ☐ Attend as many Welcome Week Social Events as you like
- ☐ Take time to have a coffee with a friend (old or new!)
- ☐ Say hello and introduce yourself to staff at the University
- ☐ Make sure you make notes of any questions that you have
- ☐ Take a breath – it's a busy time!

EVENTS

Postgraduate students starting in January

MONDAY 8TH JANUARY

First Point Information

- 🕒 All day
- 📍 Campus Hub

Pastries in the Hub

- 🕒 09:00
- 📍 Campus Hub

Registration, Visa checks & campus tours

- 🕒 09:00 – 11:45
- 📍 Devon House 224/226

Welcome to Northeastern London

- 🕒 11:45 – 12:00
- 📍 228

Studying on a Student VISA

- 🕒 12:00 – 12:45
- 📍 228

Lunch

- 🕒 12:45 – 13:45
- 📍 112/110

Student Life & Student Voice

- 🕒 13:45 – 14:15
- 📍 228

Academic Support

- 🕒 14:15 – 14:45
- 📍 228

Painting Class

- 🕒 16:00 – 18:00
- 📍 Devon House

[>> Sign up here](#)

Password: SIP&PAINT

TUESDAY 9th JANUARY

First Point Information

- 🕒 All day
- 📍 Campus Hub

WEDNESDAY 10th JANUARY

SSD & Academic Advising drop in

- 🕒 All day
- 📍 Devon House

THURSDAY 11th JANUARY

First Point Information

- 🕒 All day
- 📍 Campus Hub

Introduction to MSc AI & Computer Science

- 🕒 09:30– 11:00
- 📍 228

Introduction to MSc AI & Ethics

- 🕒 09:30– 11:00
- 📍 228

Introduction to MSc AI & Technology leadership

- 🕒 09:30– 11:00
- 📍 228

Introduction to MSc AI & Data Analytics

- 🕒 09:30– 11:00
- 📍 228

Research Talk

- 🕒 11:00 – 12:00
- 📍 228

Lunch

- 🕒 12:15 – 13:00
- 📍 Devon House

Careers Welcome

- 🕒 13:00 – 13:30
- 📍 228

River Boat Cruise

- 🕒 13:30 – 17:00
- 📍 Tower Pier

[>> Sign up here](#)

Password: RiverCruise24

Theatre trip – Hamnet

- 🕒 19:30
- 📍 Garrick Theatre

[>> Sign up here](#)

Password: PGTheatre

MONDAY 15TH JANUARY

Welcome back breakfast

- 🕒 08.30
- 📍 Campus Hub

TUESDAY 16TH JANUARY

Donuts and coffee

- 🕒 10.00
- 📍 Campus Hub

Cornhole Championship

- 🕒 All day
- 📍 Campus Hub

WEDNESDAY 17TH JANUARY

Societies and Clubs Fair

- 🕒 All day
- 📍 Campus Hub

THURSDAY 18TH JANUARY

Student Ambassador information drop in

- 🕒 12:00 – 14:00
- 📍 Campus Hub

Crafty morning

- 🕒 10:00 – 12:00
- 📍 Campus Hub

TUESDAY 23RD JANUARY

Barbie Day and Movie screening

- 🕒 12:00 – 20:00
- 📍 Campus Hub

* Mandatory events

This schedule is provisional, some events and timings may change.

Enrolment 2024

What is enrolment?

Enrolment is an important two-step procedure where NU London will verify your ID, check your qualifications, and gather important information about you. This information will help to support you during your studies, and is also needed to fulfil our regulatory obligations to the Office for Students. You will also have the opportunity to flag if you would like to be contacted regarding support with Mathematics, English, or a Learning Difference while you are studying at NU London.

How and when does enrolment take place?

The first step of enrolment is online. You will be emailed prior to Welcome Week with instructions on completing online enrolment through our student information management system, Quercus. Online enrolment will involve answering a series of questions we are required to ask for regulatory purposes, uploading a photo for your ID card, making sure that your address is up to date, adding a next of kin contact, etc. The online enrolment requirements must be completed before your in-person enrolment can take place, so please make sure that you get this done as soon as possible to avoid delays on campus. Please note that ID cards will not be handed out until this has been completed.

The next step is in-person enrolment. All new students need to complete their enrolment in person on campus, which will include bringing in the originals of your required documents (see below and page 33).



What documents do I need to enrol at NU London?

1. All students need to use a valid passport.

If you do not have a passport you can bring the following:

- Drivers licence/photo ID and
 - Birth Certificate or an adoption certificate along with another form of photo ID
2. All of the qualifications that NU London used to confirm your place at University.

E.g. your International Baccalaureate certificate, A-level certificates, undergraduate degree certificates or transcripts showing that your qualification has been awarded and the date of the award.

3. If you require a visa to study you must supply your Passport and Biometrics Residence Permit, if you have selected to collect it at a post office. If you have selected to collect your BRP from NU London, you will be handed it by the Visa Team.

4. If English is not your first language we will need to see your proof of meeting the English Language Requirements. This could include your IELTS test or your International GCSE in English certificate.

What happens if I don't have these documents?

If you do not provide your documents we cannot fully enrol you onto your programme and you will be provisionally enrolled. Students who are provisionally enrolled must provide all required documents by **Monday 29th January 2024** or access to lectures, seminars or tutorials, and access to online University resources, such as Canvas and CELCAT will be removed.

Enrolment 2024

I can't find my certificates, what do I do?

You will need to request new certificates from the examining body (e.g. AQA). There are costs linked to these services.

I won't get my official certificates until after the enrolment date, what do I do?

If you received the results of your exams, but have not been sent the official certificates yet you will need to provide your statement of results that have been stamped and signed by your school. You will then be provisionally enrolled.

Once you have received your official qualification certificates you will need to provide them to the University for verification and to complete your enrolment.

My certificates are not in English. Can NU London accept these?

If your certificates are not in English you will have to provide them to us with an English version which has been officially translated by a translation service. The translator will need to include their signature, stamp, and date on the translation document.

Please ensure that you take your documents to be translated well before enrolment to make sure that you can provide the documents by **Monday 8th January 2024**.

When is the deadline for having all required official documentation to NU London?

Students who are provisionally enrolled at NU London must provide all of their official documentation by **Monday 29th January 2024**. If you fail to meet this deadline your access to lectures, seminars or tutorials, and access to online University resources, such as Canvas and CELCAT will be removed.

DOCUMENTS NEEDED

Proof of Identity

- Valid Passport OR
- UK driving licence (showing birth in UK) OR
- Birth certificate or adoption certificate with another form of photo ID.

Proof of Qualifications

- Your official certificates, i.e. IB certificate, A-level certificates, undergraduate certificates or transcripts.
- If you have not yet received your official degree certificates please provide your statement of results, signed and stamped by your university.
- Official translation of your certificates if they are not in English.

English Language Requirements

- IELTS test or international GCSE in English certificate, if English is not your first language.

Proof of Visa

- Passport and Biometric Residence Permit if you are in the UK on a visa.



Northeastern University London Students' Union (NUSU London)

Beyond the classrooms and lecture halls, NUSU London offers students a vibrant social life. NUSU London promotes the interests of the student body as well as planning social and extracurricular activities and providing support to student clubs and societies.

NUSU London has three key objectives:

- Drive positive change to develop student advocacy capacity.
- Create a consistent and fair environment between the Union, University and students.
- Provide strong and representative student life experiences.

Upon joining NU London you will automatically be enrolled in NUSU London and be able to take advantage of the benefits that this entails.

Join the student organisations, clubs, and societies that align with your interests and passions. Immerse yourself in sports, arts, cultural activities, and events that will nurture your talents and help you strike a healthy balance between academic pursuits and personal well-being.

Remember to embrace the excitement, open yourself to new experiences, and step outside your comfort zone.

Any student can join or set up a society. NUSU London actively supports new ideas and opportunities to start additional clubs and societies.

Find out more [here](#)



NU London SU Societies

- | | |
|--------------------------|----------------------|
| 93% Club | Labour Society |
| Amnesty | Language Society |
| Arab Society | Law Society |
| Art Appreciation Society | LGBTQ+ Society |
| Stage and Screen | Lydian Society |
| Conservative Society | MUN Society |
| Debate Society | Music Society |
| Drag Race Society | P&P Society |
| Effective Altruism | Philosophy Society |
| Feminist Society | Red Cross |
| HAS | Taylor Swift Society |
| History Society | Women in Law Society |
| ICI Society | |
| Jewish Society | |

NUSU London Committee Elections

The Students' Union is a body of elected student representatives and exists to support students.

We welcome interest from all students who would like to seek election to represent the student body on the NUSU London Committee.

Elections are held during Autumn. There are a wide range of roles to get involved with, and you can find out more about the positions and the current committee on our website. The Union hosts an information event before the elections explaining each role.

All students will be notified about the information event, and we strongly recommend that you attend this session if you are thinking about running for election.

Student Voice

The student voice is a key priority in the University. It ensures student input into all areas of the University's activity, and supports the creation of a strong learning community.

You will have numerous opportunities to reflect formally and informally on your experience as a student at the University.

These include Student Voice cafes, Faculty meetings, and Student Experience Committees. We will also ask for your feedback on your courses and programme.

These really matter, because the data we gather gives us a crucial insight into how what we do impacts on your learning experience, and informs how we develop and enhance our academic programmes and academic and pastoral support for the benefit of everyone.

Student Engagement Committee

The elected student representatives for the degree subjects sit on this committee which meets once a term.

The Student Engagement Committee aims to provide a forum for students to provide feedback.



Sports Clubs, Gym & Leisure Facilities

Devon House, is situated right in the heart of vibrant St Katharine Docks, surrounded by lively bars and restaurants, and just a few minutes' walk from the City.

There are also plenty of options for keeping fit and exercising!

Anytime Fitness Aldgate

Student Membership from £35 per month

- Open 24/7 – train whenever you like, 365 days a year
- High-spec equipment – a wide variety of quality cardio equipment, weights and functional training space
- Full timetable of classes – from Dance Fit, Circuit Training and Yoga, to HIIT, Boxing and Xtreme Burn HIIT
- Worldwide access – keyfob grants you access to over 175 UK and Ireland clubs, along with 4,500+ worldwide.

Fitness First Wapping

Annual membership is from £58 per month

- Seven-minute walk from Devon House
- Fitness facilities including a cardio theatre, spin studio, sauna, freestyle floor, swimming pool, hair salon, beauty rooms, members' lounge as well as free Wi-Fi
- Daily schedule of group exercise classes, including aqua fit, Zumba, yoga, spin, boxing, pilates, Swiss ball, boot camp and Body Pump, personal training sessions are available too.

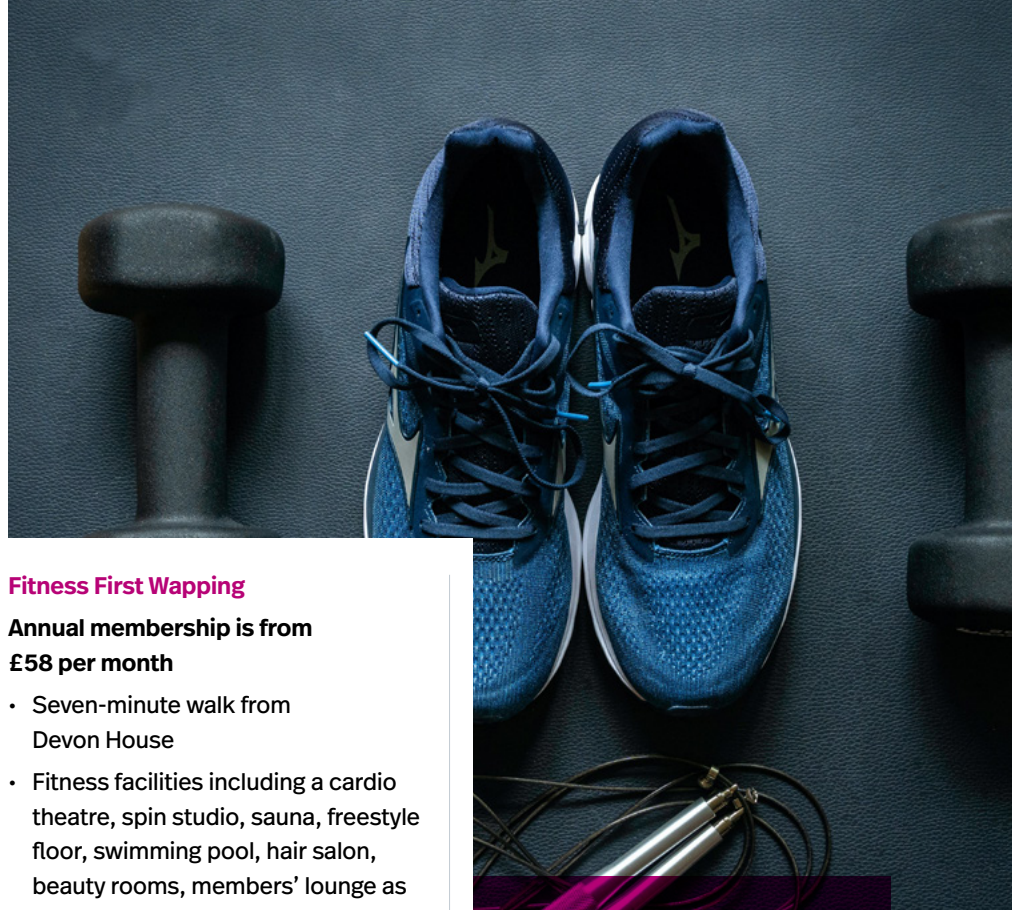
John Orwell Sports Centre

Membership from £38 per month

- Fully equipped, air-conditioned gym offers a range of fitness equipment, from cardiovascular machines such as treadmills and rowers, to resistance equipment, free weights, dedicated stretching areas and fitness aids such as TRX and Swiss balls.
- Studio with a full weekly programme of a range of Fitness Classes to vary your workout
- Newly refurbished Outdoor Astro Turf pitch available for:
 - Quarter Pitch 5-a-side hire
 - Half Pitch 9-a-side hire
 - Full Pitch Hockey hire

Student Accommodation

Our recommended accommodation providers, IQ Aldgate and Chapter Spitalfields, offer a free onsite gym for residents.



TEAM SPORTS

London offers a host of opportunities to get involved in team sports at every level!

From football, hockey, and tennis to ultimate frisbee, softball, and tag-rugby, you'll be spoilt for choice, whether you want to take part in friendly knockabouts in London's beautiful parks, or serious national league competitions.

STUDENT'S UNION SPORTS CLUBS

- Bouldering
- Women's Football
- Men's Football
- Volleyball
- Netball
- Badminton
- Table tennis
- Basketball
- Running Club
- Northeastern University Cornhole League

Devon House

Our state-of-the-art campus is positioned at the centre of historic St Katharine Docks, just a few minutes' walk from the historic Tower of London, and iconic Tower Bridge.

The campus enjoys stunning river views with terraces and open areas, and is surrounded by dozens of restaurants, cafes, bars, and a leisure marina, and is part of a dynamic and vibrant waterside community.

Devon House is situated just minutes from the City, London's largest financial and commercial hub, where modern corporate skyscrapers tower above medieval alleyways below.

The campus is the focal point for our global community of over 1000 students, with NU London and Northeastern University students sharing facilities and social opportunities.

There's plenty to do right on the doorstep of Devon House and many of the local businesses offer generous discounts to our students!



Discounts @SKD

THE MELUSINE

10% OFF
TOTAL BILL

URBAN BARISTAS

25% OFF COFFEE

BROMPTON

BIKE HIRE
BORROW A BIKE

F45

FIRST SESSION
FOR £10

EMILIA'S

CRAFTED PASTA
10% OFF FOOD
& DRINK

TRADERS WINE BAR

10% OFF DINE IN
FOOD BILL

CÔTE BRASSERIE

COMPLIMENTARY
GLASS OF WINE

KILIKYAS

20% OFF A LA
CARTE MENU

JOHN HARDING SALON

20% OFF ALL
HAIR AND BEAUTY
TREATMENTS

ST. KATHARINE DOCKS CAFE

10% OFF FOOD
AND DRINK

LAGOON DRY CLEANERS

5% OFF

THE DICKENS INN

20% OFF FOOD

NOXY BROTHERS

15% OFF FOOD
AND DRINK

PING PONG

15% OFF FOOD
AND DRINK

ZIZZI

20% OFF A LA
CARTE MENU

VICINITY AT THE TOWER HOTEL

20% OFF FOOD

THE XI BAR AT THE TOWER HOTEL

20% OFF IN THE
XI BAR

CAFÉ ROUGE

25% OFF MAIN
COURSES

SLUG & LETTUCE

10% OFF FOOD
& DRINK

MUSTO

20% OFF
FULL-PRICE



Exploring London

Studying at NU London presents an enviable opportunity to live and study in London, one of the world's most dynamic cities.

No matter what your interests or what you want to get out of London, there is always something to do or somewhere to be, from art galleries and museums, theatres and historical sites, to clubs, restaurants and bars, vibrant food markets, world-famous shopping streets, spectacular parkland, or even boating on the Thames!

Whether you want to see your favourite band perform, visit a world-famous gallery, or have a great night out, there is always something to do and people to do it with.

Hotel Discounts

If you have family or friends staying, there is a wide choice of hotel accommodation to choose from. NU London students have access to discounts at the Tower Hotel London and CitizenM Tower of London Hotel.

<http://www.nulondon.ac.uk/hotels>



Transport

London's transport system includes buses, underground tube trains, overground rail, trams, and a river bus service. You can find out about all the services and plan your journey at <https://tfl.gov.uk>

Underground

Devon House is conveniently located near multiple Tube Lines including the Central, Circle, District, Elizabeth, Jubilee, DLR, and Northern.

National Rail

Overground trains into London Liverpool street will bring you a few minutes' walk through the City and along the Thames to our campus.

Bus & Tram

London's iconic red buses are a great way to get around, and if you get a seat on the top deck offer the perfect position to see the sights of London! A Hopper fare gives you unlimited bus and tram journeys for £1.75, made within one hour of touching in. Touch in using the same card or device on all journeys and you get the Hopper fare automatically.

Uber Boat

The Thames Clipper river bus service stops at Tower Bridge, just a couple of minutes' walk from our campus. Boats stop at 24 piers along the Thames between Barking Riverside Pier in the East and Putney Pier in the West. Services run from early in the morning until late at night 7 days a week.

Student Travel Card

You can find lots of helpful advice and tips about travel around London, including how to save money on tickets, at <https://bit.ly/studenttraveloyster>

Night Transport

Londoners enjoy the luxury of a night Tube service every Friday and Saturday. The Piccadilly (blue), Central (red), Northern (black) as well as the Jubilee (grey) and the Victoria (light blue) all run 24 hours over the weekend with trains running on average every 8-10 minutes!

London has an excellent night bus service which will allow you to get around easily and safely if you need to travel later at night or very early mornings!

Citymapper

CityMapper is a really handy app that you'll find becomes your essential travel companion. Not only does it provide the best routes and methods of transport, it also gives live updates on prices journey times.

www.citymapper.com



London Living

London is generally a safe city, and it is a great place to live. As with any large city, it is worthwhile taking precautions when out and about, especially at night.

Personal Safety

- Plan ahead for nights out
- Make sure someone knows where you are going, who you are meeting and when you expect to return
- If you are out with a group of friends, watch out for each other and make sure everyone stays safe
- Avoid carrying large amounts of cash with you
- Be wary of pickpockets at large gatherings and in crowds. Place your purse or wallet in a zipped or buttoned pocket
- Do not travel unaccompanied at night. Avoid risky spots such as poorly-lit areas, deserted parks, or quiet alleyways
- Don't leave your drinks unattended (see info box)
- Avoid accepting drinks from strangers
- Walk with confidence and purpose
- Keep your belongings close and keep your bag in front of you, not on your back
- Avoid using your phone on the street
- Consider carrying a personal panic alarm
- Plan your return journey in advance and try to travel back with friends
- Think about the risks before inviting someone you have just met to your room.



Ways to prevent your drink being spiked

- Go to the bar with a friend or group of friends
- Cover your drink
- Don't accept drinks from strangers
- Never leave your drink unattended
- Watch out for changes to your drink
- Don't drink from other people's glasses

What to do if you or a friend are victims of spiking

- Do not leave the victim alone or let them go home alone or with a stranger
- Tell a member of bar staff or the manager immediately
- Telephone the Police
- Keep the victim talking
- If the victim's condition deteriorates, seek medical help or call an ambulance

Banned and restricted goods

There are some goods you cannot bring into the UK – they'll be seized by customs. These include:

- controlled drugs
- offensive weapons, for example flick knives
- self-defence sprays, for example pepper spray and CS gas
- endangered animal and plant species
- rough diamonds
- indecent and obscene materials, such as books, magazines, films and DVDs
- meat and dairy products from most non-EU countries

London on a student budget



Museums & Galleries

Did you know that London's public museums and galleries are free to visit?

Most of London's major museums – as well as many of its smaller institutions and every commercial gallery – are free to enter, so you can see world-class art and artefacts without having to dip into your wallet.

From the Tate to Gagosian, the National Gallery to Camden Art Centre, you've got your choice of literally hundreds of amazing art spaces, all free. Want to see masterpieces by Raphael and Turner, or contemporary abstraction by future art stars? You can, and you don't have to pay.

Parks and Open Spaces

London is one of the greenest cities in the world and is made of 40% public green space. The centrepieces of Greater London's park system are the eight Royal Parks of London.

Covering 4,882 acres, they are former royal hunting grounds which are now open to the public. The city's parks are full of natural and manmade wonders that you can enjoy as you wander around.

Student Discounts

As well as the SKD campus discounts, there's a whole world of national student discounts.

Make sure you check out the free Apps **UNiDAYS** and **StudentBeans** which offer amazing student discounts on food & drink, fashion, tech, beauty, lifestyle, health and fitness as well as travel and entertainment. You can also get an NUS-extra card (TOTUM) costing £14.99 annually (or £24.99 for 3 years). All of these offer attractive discounts available in-store and online.

With or without these, it's always worth asking at the till if somewhere offers a student discount.

Discounted Food

For students on a tight budget in London, **Too Good To Go** is a must-have app. It's a useful tool for discovering affordable dining options. By the end of the day, vendors with excess food sell everything at discounted prices on the app, avoiding food waste.

You'll discover incredible deals and effortlessly keep track of your favourite places right on your phone.

Eating out, days out and events

Make sure you are tapped in to the apps below to find plenty of ideas for free and cheap places to visit in London

[timeout.com](https://www.timeout.com)

[skintlondon.com](https://www.skintlondon.com)

[visitlondon.com](https://www.visitlondon.com)

The must-have apps

CityMapper

The ultimate transport guide – this is your go-to travel planner.



Stint

Turn your downtime into fast money. Stint lets you sign up for quick shifts at local businesses at convenient times for you. No commitment. No CV. No interview.



GoConqr

Access great learning resources like Mind Maps, Flashcards, Quizzes, Slides and Notes, or use the GoConqr app for social learning and connect and collaborate with friends, classmates and learners in Groups.



Dines

Good deals on food at many local restaurants in Central London, support the community and discover new places to eat cheaply!



Too Good To Go

Get yourself cheap, delicious food every day while combatting food waste!



Hold!

Want to be rewarded with vouchers for not being on your phone?! Hold! Is for you!





London by degree

London is one of the best places to study in the world! Here are some of our current students' recommendations for great places to visit.

Global Investment Banking in London

The Square Mile

The City, nicknamed the Square Mile, is one of the world's leading centres for global commerce and banking, and home to numerous financial institutions, generating over £85bn in economic output annually and accounting for one in every five financial services jobs in GB.

Just wandering around gives you the sense of history, art and commerce; see the Guildhall and Guildhall Art Gallery with the Roman Amphitheatre in its basement, the churches, the livery companies and the museums including one in the Bank of England and even small sites in commercial buildings (e.g., the Roman mosaics discovered here during excavations). Some banks hold collections of paintings that they allow the public to see, some are just great old or modern buildings, and now some have been converted to pubs and restaurants.

You can stroll around the streets and alleyway of London exploring how the City of London developed into a global financial centre, taking in key buildings such as: the London Stock Exchange, Guildhall, the Bank of England, Lloyds of London and Rothschild's.

Pevsner guide to the City of London

The Royal Exchange

EC3V 3LR

Royal Exchange, London's first stock trading centre was established in 1566 by Thomas Gresham. Destroyed twice by fires and built a third time in 1844, the exchange symbolised the close coupling of royalty and the history of Britain's worldwide trade and eventually, after a period of housing the Financial Futures and Options Exchange, became a luxury shopping centre. The present London Stock Exchange at Paternoster Square is close to St Paul's Cathedral; it launched the Alternative Investment Market for small, growing companies in 1995.

www.theroyalexchange.co.uk/heritage

Bank of England Museum

🚶 Bank, Liverpool Street

A museum with various exhibits outlining the role of London in maintaining global economic and financial stability, and its role in the modern global economy.

www.bankofengland.co.uk/museum

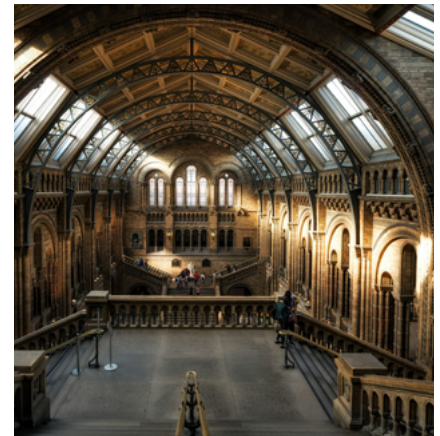
Museum of London Docklands

🚶 Canary Wharf

DLR West India Quay

A museum with various exhibits showing the role of the Docklands in helping develop London into the economic powerhouse it is today. Exhibits include "Warehouse of the World", "Trade Expansion", and "London, Sugar, and Slavery".

www.museumoflondon.org.uk



Spitalfields

E1 6AA

Walk around East London's Spitalfields is steeped in history and culture offers the opportunity to see small businesses in action. What trends can you spot in the market stalls? Debate the ethics of dark tourism and Jack The Ripper walking tours while having refreshments in the Ten Bells, a pub frequented by Annie Chapman and Mary Jane Kelly. Look around and the different shops, and consider how niche retailers are trying to survive in a world dominated by online shopping.

www.eastlondonhistory.co.uk/visit-spitalfields

Museum of Neoliberalism

SE12 8TF

Neoliberalism, one of the most powerful economic and political philosophies of our time, needs to be critically engaged in order to be fully understood. Here, artist Darren Cullen uses brandalism and subvertising tactics to hit back at the system.

www.spellingmistakescostlives.com/museumofneoliberalism

(pre-booking your visit is essential)

Artificial Intelligence in London

Science Museum

📍 Kensington, Gloucester Road

Thinking Machines: Stories from the History of Computing at the Science Museum explores the evolution of computers.

Until the early 20th century, a computer was a person who performed calculations by hand. But key innovations in technology saw machines take on this role—what were they, and who was behind them?

In the short history of computers as we know them, these world-changing machines have shrunk dramatically. Meanwhile their processing power only continues to increase, so that most of us now have a powerful computer in our pocket.

How did we get here, and what were the key moments that shaped our computerised world? Free entry.

www.sciencemuseum.org.uk/objects-and-stories/thinking-machines-stories-history-computing

Science Museum (Power Up)

📍 South Kensington, Gloucester Road

160 consoles. Five decades. Game on! Immerse yourself in this hands-on gaming experience, featuring the very best video games and consoles from the past 50 years. From Pong to Pacman and Minecraft to Mario, there's something for everyone, whether you're a retro games fan, a serious gamer or just want to beat your family at Mario Kart. Day pass £10.

www.sciencemuseum.org.uk/see-and-do/power



HereEast

📍 Stratford Rail Stratford

Here East is home to a vibrant mix of innovators, visionaries and like-minded locals looking to challenge the status quo.

From software developers to modern dancers, from baristas to electronics engineers, from student architects to data scientists – together, we're working towards a new way of thinking, a better way of doing, and a seamless path to exciting, collaborative opportunities that change the way we live and work.

Here East is located in London's Queen Elizabeth Olympic Park and invites innovators, disruptors, visionaries and like-minded people to share – and participate – in the making of game-changing innovations.

www.hereeast.com

The National Museum of Computing

📍 Bletchley Railway Station

TNMOC is home to the world's largest collection of working historic computers.

Follow the development of computing: from the Turing-Welchman Bombe and Colossus of the 1940s through the large systems and mainframes of the 1950s, 60s and 70s, to the rise of personal computing and the rise of mobile computing and the internet.

Entrance fee £7.50.

www.tnmoc.org

Bletchley Park

📍 Bletchley Railway Station

Discover the incredible achievements of Britain's World War Two Codebreakers, in the place where it happened.

Immersive films, interactive displays, museum collections and faithfully recreated WW2 rooms will guide you on a journey to discover the past at Bletchley Park. Exhibitions, set within beautifully restored historic buildings, tell the story of this once top-secret operation. Find out more about the brilliant minds and complex machines that made this vital work possible, and discover the global impact Bletchley Park had on the outcome of WW2.

Entrance fee £23.

www.bletchleypark.org.uk

Apple Store Covent Garden

📍 Covent Garden

The world's largest Apple shop has opened in London's Covent Garden. As well as displays of the latest tech products and expert advice, the store runs free creative sessions every day. Join a session to advance your photo skills, take a videoing master class, discover how to create music, or take a first step in coding and apps where you'll learn to write code or start building your app idea.

www.apple.com/uk/retail/coventgarden

Philosophy in London

The Mind Association

Various locations

The Association provides funding support c70-80 philosophy conferences annually; offers research funding awards to junior and senior scholars through the Mind Fellowships; and offers an annual Research Studentship award, open to recently awarded or near-completion PhDs. It also co-organises the largest annual philosophical gathering in the UK: The Joint Session of the Mind Association and Aristotelian Society.

www.academic.oup.com/mind

The Aristotelian Society

Various locations

The Aristotelian Society was founded in 1880, and meets fortnightly in London to hear and discuss talks given by leading philosophers.

www.aristoteliansociety.org.uk

London Aesthetics Forum

📍 Goodge Street

The London Aesthetics Forum (LAF) is a Forum of the Institute of Philosophy at the University of London's School of Advanced Study. With lectures on topics in aesthetics and philosophy of art, LAF aims to stimulate philosophical reflection on art. Events are free and open to all.

www.londonaestheticsforum.org



The London Philosophy Club

Various locations

The London Philosophy Club holds free talks from some of the leading contemporary philosophers, including (recently) Robert Skidelsky, John Gray, Galen Strawson, Angie Hobbs and Stephen Cave. The club organises debates, socials, and a regular reading group. Events are fun, accessible and interactive, and are all guided by the belief that philosophy improves people's lives and should be open to all.

www.meetup.com/londonphilosophers

Freud Museum, NW3 5SX

📍 Finchley Road, Hampstead

The Freud Museum was the final home of Sigmund Freud, the founder of psychoanalysis, and his daughter Anna Freud, a pioneering child psychoanalyst. The Freud Museum exists to promote the intellectual and cultural legacies of Sigmund and Anna Freud for the learning and enjoyment of all. Entry £7.

www.freud.org.uk

Politics in London

The Palace of Westminster

📍 Westminster

Both the House of Commons and House of Lords have public viewing galleries and entry is free. Arrive at Cromwell Green entrance, off St Margaret Street, about 2pm and queue for a place.

www.parliament.uk/visiting or you can book a tour (entry £21) ukparliament.seetickets.com/content/ticket-options

Political Events and Talks

There are always numerous political events and talks taking place in London. Find the latest listings at www.eventbrite.co.uk/d/united-kingdom--london/political/

Chatham House

📍 Piccadilly Circus

A world-leading policy institute marking a century of trusted dialogue, independent analysis and influential ideas.

www.chathamhouse.org

Libraries & study spaces

As an NU London student there are a number of world class libraries in London and online at your disposal.

Northeastern University Library

NU London students have access to most of the vast digital resources available from Northeastern University's Library, with over 800,000 e-books, 100,000 electronic journals and 100,000 streaming video and audio titles in the collection. The Library also offers a number of helpful resources including a 24/7 LibChat service, one-to-one assistance from subject specialist librarians and workshops and events throughout the year.

<https://library.northeastern.edu/gateways/london-students>

Senate House Library

NU London students can sign up for membership to Senate House Library, one of the UK's largest academic libraries for arts, humanities & social sciences. Located in central London, it is home to over two million books and over 1800 archives and special collections. It's also a great place to study late. Details on how to sign up for membership will be provided during Welcome Week or you can [sign up here](#).

www.senatehouselibrary.ac.uk



City of London Libraries

Students can also become members of the City of London's lending libraries at the Barbican Centre, Shoe Lane and Artizan Street. Facilities offered at these libraries include study space, wifi, printing, book borrowing privileges and access to digital resources. In addition, access can be requested to the CoL research libraries - Guildhall Library and the London Metropolitan Archives. You can [sign up for membership here](#)

<https://bit.ly/studentcitylibraries>

British Library

London has a superb collection of top-notch libraries, including the renowned British Library. Its Reading Rooms are dedicated spaces for quiet study where you can explore any of the 170 million items in the British Library's collection. Access to the Reading Rooms is with a Reader Pass, which you can get for free. Sign up for a [Reader Pass here](#)

<https://bit.ly/blreadingrooms>

Westlaw and LexisNexis

Students on the Law course have full access to the most up-to-date law reports, case law, legislation, journal articles and more through the Westlaw and LexisNexis online legal databases.

Part-time employment

Finding a part-time job to supplement your student budget will not only give you more cash to play with, but it's great for your CV too.

Student employment opportunities often revolve around customer service roles such as bartending/waiting or retail work. Look online or just walk around an area in London you would like to work at with a handful of CVs and chat with the staff inside!

Some students are more adventurous and have set themselves up as spin instructors, a bike tour guide, tutors/teachers or freelance journalists. However, we recommend working no more than 15 hours per week, as you don't want your job to interfere with your studying.

You may be offered a zero hours contract. The benefit of going zero hours is that when you've got coursework due in or exams coming up, you can tell your work that you're not available. Of course, the downside is that you might not always get work when you want it!

If you are interested in learning more about marketing, the marketing team often have one-off jobs and sometimes longer-term roles available.

The Save The Student website has lots of really useful information and advice for students about how to make money, as well as suggestions for the best ways to look for work, and recommendations for how to make sure you get the job!

www.savethestudent.org/student-jobs

The Stint app lets you sign up for quick shifts at local businesses at convenient times for you. No commitment. No CV. No interview.

- **Most Stints are around 2 to 3 hours long** – perfect to drop in among your other commitments
- **No minimum hours** – if you're busy with other stuff, no worries
- **No commitment** – need to focus on your studies? Heading abroad for a while? No problem. Take as long as you like, there will be Stints for you when you're back

Find out more at <https://stint.co/for-stinters> or download the app.

UK Student Visas

Students on UK Student Visas can work a maximum of 20 hours per week during term time. This includes internships, voluntary work and unpaid work.





Students can look forward to a series of engaging events featuring guest speakers, esteemed alumni, and industry experts.

Careers & Experiential Learning

At Northeastern University London, our team of dedicated Careers and Experiential Learning Advisers will work closely with you to create a personalised experiential journey that enhances your employability potential and aligns with your aspirations and goals.

Careers

Our Careers Advisory Service hosts a series of events and opportunities with guest speakers, alumni and industry panels across a range of sectors, as well as providing seminars and clinics on key topics.

- Careers clinics, 1:1 advising, practitioner workshops, and weekly drop-ins
- 'Day in the Life of' events
- Co-op and internship guidance and support
- Mock interviews and simulated industry tests
- Guest Lectures and Practitioner Workshops

Entrepreneurship

Our Start-up Space (Vine Street, launching Spring '24) is a dynamic hub for innovation, connecting the local startup ecosystem, entrepreneurs, investors, industry, and community, with researchers, students, and alumni while also harnessing the potential of the global entrepreneurship network.

Experiential Learning

'Learning through doing' integrates the classroom with the real world and can include:

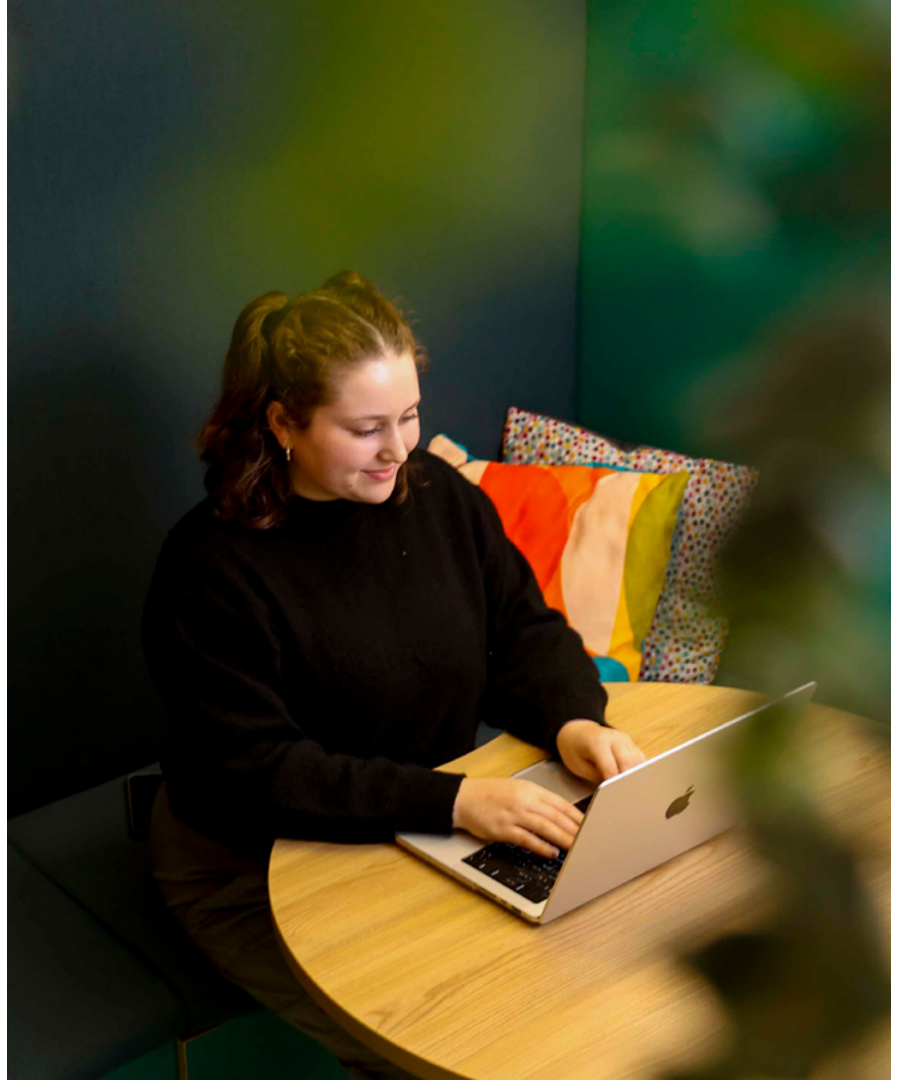
- Innovation Workshops
- Hackathons
- Prototyping
- Site Visits & Field Trips
- Research Assistance
- Industry Certified Bootcamps
- Consulting Projects
- Investor Pitches
- Work Shadowing
- Industry Mentoring

Would you like to be a Student Ambassador?

Our ambassadors play a vital role in supporting and guiding prospective students and their families. They offer valuable support, encouragement, and advice at events and projects, ensuring that students have the best possible experience. We have a variety of roles and responsibilities available for our ambassadors to make a meaningful impact in our community.

£12.00 per hour, with flexible hours to work around lecture times.

Contact: senior.ambassadors@nulondon.ac.uk



Ways for NU London students to make money*



If your photo features on our Instagram



If you review us on Whatuni, The Student Room or Facebook (£5 per review)



Per TikTok



If you send us a blog and it's posted on the NU London website



For a marketing photoshoot of an hour or more

Welcome Week is a great opportunity to take some photos and send them in to the marketing team!

Please send any photos, blogs or questions to marketing.team@nulondon.ac.uk

*Students on UK Student Visas can work a maximum of 20 hours per week during term time. This includes internships, voluntary work and unpaid work.

Student Support and Development

Starting at university in a new country and an unknown city can be both exciting and challenging.



Most students will encounter the odd bump or two during their university studies, this may be practical problems for example issues with student loans or it may be personal issues such as illness or feeling anxious or overwhelmed.

Student Support and Development (SSD) can help with any pastoral issue that you might encounter during your time at NU London. We can offer advice and guidance with most student life issues – from student funding, budgeting and unexpected financial hardship to disability and mental health support.

We are also here to offer a safe space for you to talk about anything that may be playing on your mind, whether it is problems on your courses, something in your personal life or if you are worried about a friend or a situation at home. We have a great team of staff in SSD and we can also make referrals to external specialist services such as counselling and disability assessment and support services.

More detailed information about SSD can be found on our website and will also be included in your Student Handbook: nulondon.ac.uk/student-support

In the meantime, please feel free to contact us if you have any questions or concerns about starting your study at NU London. You can email: studentsupport@nulondon.ac.uk.

Health

Make sure you register with a local GP and dentist during Freshers' Week!

You can find a GP here;

<https://bit.ly/skdstudentgp>

and a dentist here;

<https://bit.ly/skdstudentdentist>

Please also make sure you inquire with your GP about getting the MenACWY vaccine which is essential for new students.

Hopefully, none of you will ever need to go, but our local hospital is Royal London Hospital on Whitechapel Road

www.bartshealth.nhs.uk/the-royal-london



Chat to our current students
about life at University
nulondon.ac.uk/ambassadors

Follow us on social media to keep
up to date with our latest news and
find out more about student life at
Northeastern University London

NortheasternLDN



Northeastern.LDN



Devon House
58 St Katharine's Way
London E1W 1LP
United Kingdom

nulondon.ac.uk
info@nulondon.ac.uk
+44 (0)20 7637 4550