

Undergraduate guide **2027**



Discover Northeastern University London, **where your learning is powered by experience**

What's inside

- 04** Welcome
- 06** Learning through experience
- 08** Your global gateway
- 10** Your degree, your way
- 12** Your campus
- 18** London living
- 20** Student community
- 22** Where you'll live
- 24** How we support you
- 25** Start your career here
- 26** Choose your study programme
- 27** Entry requirements
- 28** How to apply
- 29** Important dates and deadlines
- 30** Widening participation
- 32** Fees and funding
- 33** International students
- 35** Visit us



Be a part of the action

Study at an innovative university that's as bold and ambitious as you are

Be part of a thriving, collaborative and diverse global student community that spans continents.

Experience state-of-the-art campus facilities in the heart of London – the capital of business, technology and culture, where the city becomes an extension of your classroom.

Immerse yourself in a vibrant and close-knit learning community where every contribution is valued.

Encounter fresh perspectives and develop new skills through the courses you study, the people you meet and the opportunities you discover, on campus and beyond.

At Northeastern University London, you can do all this and more.

Personalised learning

All our students benefit from personal support and guidance, within a collaborative and intimate learning environment.

2,247

students

14:1

student to academic ratio

40

students or fewer in most classes



Real-world experience

Learning through experience is core to our approach. Throughout your studies, you'll elevate your classroom learning as you work on challenges with real-life impact.

Our close partnerships with organisations from startups to multinationals will give you a head start in your career, with experience to help you stand out from the pack.

Customise your degree

Many of our degree programmes are customisable, so you can explore your passions and shape your degree to fit your goals.

With electives available in multiple subject areas, you can build your knowledge and skills across disciplines, giving you a real advantage in an ever-changing job market.

Global community

As part of Northeastern University's network of 13 university campuses across the USA, Canada and London, and with more than 3,800 international partners, we offer a truly global mindset.

You can choose to broaden your horizons through overseas study and connect to a worldwide network of researchers and industry partners that will enrich your experience.

Support at every step

We keep our class sizes small, so you're never just another face in the crowd.

You'll receive personal attention from our dedicated teaching and student support staff, as well as academic and careers advisers who are committed to helping you succeed.

Learning through experience

Gain the confidence, skills and industry insights that set you apart

At Northeastern University London, learning goes far beyond the classroom.

You'll experience academic teaching with practical application: soak up site visits and talks from guest speakers in your field, explore real-life case studies, and join research projects directed by leading academics.

You'll apply the skills and theory you're learning to solve real problems set by external organisations. From established global companies to challenger brands, you'll make a tangible impact on their work and decision-making.

In the process, you'll gain essential transferable skills such as teamwork, creative thinking and adaptability – all while building your network, your confidence and your career prospects.

Professional work placements

Our cooperative work placements – known as “co-ops” – offer a unique opportunity to explore potential careers and apply your classroom learning to real-world needs.

During a co-op, you'll immerse yourself with one of our partner organisations over a period of months, working with mentors who are fully invested in your success.

We'll support you to find opportunities that are right for you, and to make the most of your experience.

See which degree programmes are eligible for co-op work placements on page 26.

Impact challenges & industry bootcamps

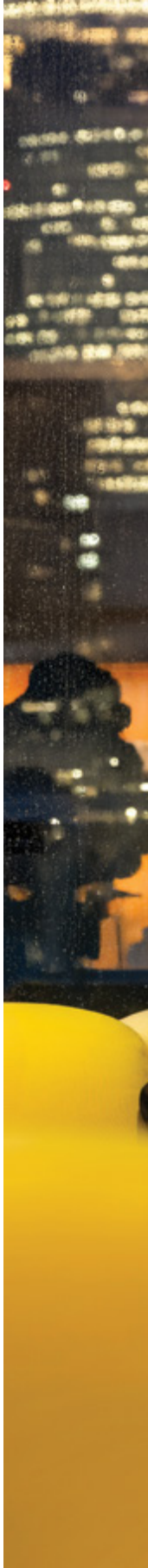
Our impact challenges and industry bootcamps are just two examples of the many ways you can engage in hands-on experience.

Through impact challenges, your work contributes to an industry partner's projects. You'll gain practical skills and valuable industry insights, and learn to translate academic concepts into real-world contributions, while building a professional network for after graduation. Meanwhile our bootcamps offer you focused training, delivered or certified by industry partners.

Discover more ways to learn through experience and enhance your employability at nulondon.ac.uk/experiential-learning

“It was a chance to get real-world experience as well as learn about it in an academic way at the same time, so it was a mixture of both – I think that kind of opportunity is quite rare.

Jack V, Business student





Some of our experiential learning partners

- Clifford Chance
- Deloitte
- EdenBase
- Ernst & Young (EY)
- Google
- J.P. Morgan
- Marks & Spencer
- measureable.energy
- NBCUniversal Media
- PwC UK
- Salesforce
- ServiceNow
- Tesco
- UK Civil Service
- Volans

Gain valuable experience

Our Startup Hub hosts over 20 promising new companies where you can apply for short-term placements.

Your global gateway

Step onto the international stage

At Northeastern University London, you're part of a unique global campus network, linking staff and students across campuses in London, the USA and Canada.

This international reach provides invigorating cross-border connections that spark new ideas, open new doors and enrich our research and study programmes.

Through our network of campuses, partnerships and alumni, you'll be immersed in rigorous academic study and real-world experience on a global stage – so you'll graduate ready to make a positive impact on the world.

Study in the USA*

As an undergraduate student you may have the option to spend a semester at Northeastern University's Boston campus for a once-in-a-lifetime experience.

You'll make new connections and get a taste of student life overseas. You'll discover new ways of living, learning and teaching, and the vibrant atmosphere of a US university campus.

While in Boston you'll follow a US curriculum. The credits you earn will count towards your Northeastern University London degree, so you'll stay on track to graduate on time.

* Most of our degree programmes offer a study abroad option – see the table on page 26 to check which programmes offer this opportunity.





The best of two worlds

Many of our degree programmes offer you the opportunity to earn a double degree – and the right to work in both the USA and UK – with just one extra year of study.

At the end of your UK degree, you will have the option to:

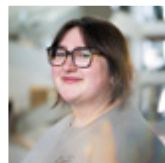
- continue with a fourth undergraduate year at Northeastern’s Boston campus, earning a US-validated degree in the process, or
- enrol on a master’s degree straight after graduating, studying at one of Northeastern’s campuses in the USA or Canada.



Scan the QR code to learn more



Studying and living in the USA has allowed me to immerse myself in a new culture and country, expand my global perspective, and adapt to new ways of learning that have deepened my understanding.”



Beth F, Politics and Data Science student

Our international network

Northeastern University’s global network of 13 campuses and institutes, and 3,800+ partners worldwide, provides ample networking and further study opportunities.

**Your degree,
your way**

Create a curriculum that's unique to you

We don't believe in rigid subject boundaries, which is why we offer the opportunity to explore a wide range of courses outside your degree subject.

With dozens of electives to choose from, you're invited to design your personal academic journey – one that matches your interests and aspirations for the future.

You might study across disciplines, gaining valuable experience for a world where the ability to adapt and think differently is highly prized. Or you could delve deeper into your degree subject, setting yourself up for the career you've always dreamed of.

Whatever you choose, your academic adviser will be there to guide you, helping you explore the options that are best suited to your goals and ambitions.

Personalise your study programme

With around 85 electives to choose from across our single-honours programmes covering a range of topics, the possibilities are vast.

Find elective courses and pathways in:

Art History

Business

Computer Science

Creative Writing

Data Science

Economics

English

History

Law

Mathematics

Philosophy

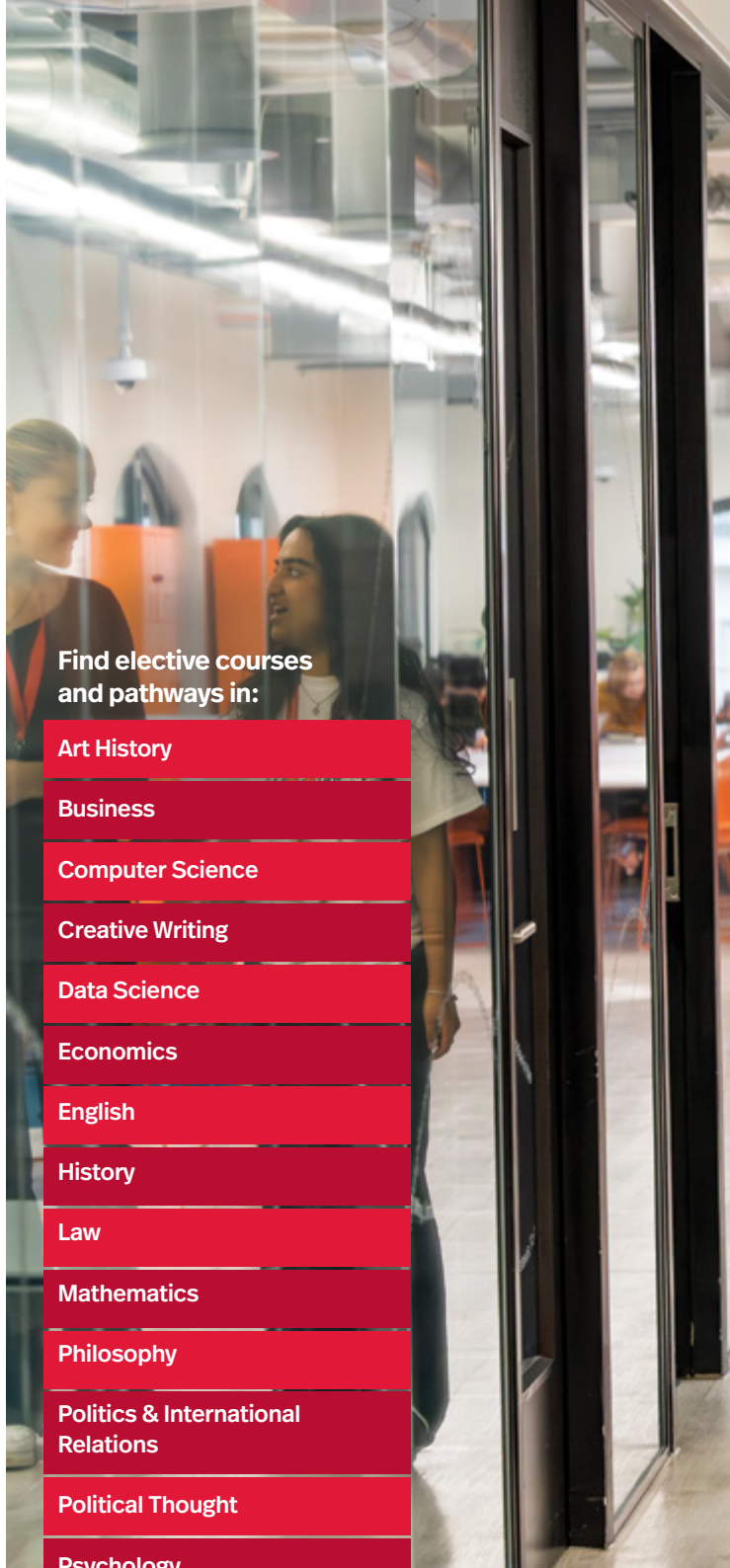
Politics & International Relations

Political Thought

Psychology

Sustainability

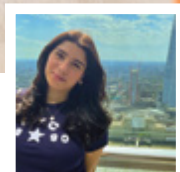
Technology & Ethics





Studying at Northeastern University London has been great so far. I like the small class sizes as I am able to build a relationship with my professors and seek guidance at any point. All classes are engaging and course material is always available and varied.

Zoe C, Law student





A student-friendly city

London consistently ranks as one of the world's best student cities (QS Best Student Cities), scoring highly on its diverse student population, friendliness, sustainability and employment opportunities.

Explore the campus



Your campus, at the centre of the action

**Set in the heart of London,
our state-of-the-art
buildings place you right
in the nerve centre of this
vibrant global city.**







Your campus

Devon House

Study in inspiring surroundings

With its riverside setting at St Katharine Docks on London's only leisure marina, Devon House is a contemporary and tranquil oasis.

Yet just a few minutes' walk away, you'll find some of the city's most popular historic sites, including the Tower of London and Tower Bridge.

With high-tech classrooms, quiet study zones, seminar and tutorial rooms, meeting pods, recreational space plus tea and coffee points, Devon House has everything you'll need to thrive.



I love how modern and nice the campus is. It's perfectly placed for access to central London, and its position right on the river provides the most beautiful, relaxing views to study.

Ella R, student



Northeastern University





University London

Your campus

One Portsoken

**Forge your path
at the centre of
commerce**

Set on the edge of the financial district, One Portsoken offers a 360-degree view of the London skyline and many iconic landmarks.

Our newest facilities at One Portsoken are set over three floors boasting world-class labs, workshops and a makerspace.

This modern space offers everything you'll need, with quiet study zones, meeting pods, seminar and tutorial rooms, high-tech classrooms, and tea and coffee points.



London living

Explore London's culture, and uncover new opportunities

It's hard to imagine a more exhilarating place to be a student than London: one of the most dynamic and diverse cities in the world.

Arguably the beating heart of Europe, the capital is a booming tech and finance hub. Yet it's also a cultural hotspot where centuries of rich history meet the cutting-edge ideas of the future.

Discover the latest band, cheer on premier league footballers, or soak up art and history at one of London's many theatres, galleries and museums... whatever your passion, there's always something happening.

And with leading employers within easy reach, you'll have unlimited opportunities to gain real-world experience and make industry connections – setting you up for a bright future.







“

There are endless opportunities to get involved. I'm currently part of six clubs, including being vice president of a society, a student ambassador, and a student representative. If a club doesn't exist, it's easy to start your own – just like I did.



Tasneem T, Business student



Student community

Create memories to last a lifetime

Northeastern University London is a place where you can grow and make new connections – and memories you'll treasure forever.

You'll be part of a truly diverse and lively community where everyone is unique, and everyone belongs. With this vibrant mix of people from different nationalities, backgrounds and cultures, you can expect a university experience that's fun, exciting, and filled with new discoveries.

There are plenty of activities to dive into, so whatever gets you excited, there's a welcoming community for you.

Events

You'll find a busy calendar of events across our campus buildings, in our student accommodation, and in and around London's myriad cultural hotspots. From themed social events and celebrations to creative writing open mics, crafting sessions and gaming nights, there's always something new to explore. And you can check out stimulating workshops and talks on a broad range of topics including science, philosophy and more.

Clubs and societies

Meet like-minded people through student-run clubs and societies, where you can develop meaningful relationships with others who share your interests. The Students' Union offers a huge range of active communities that bring students together to collaborate on projects. Whether you're a Swiftie or a film buff, there's something for everyone.

If you're a sports enthusiast, you'll have the option to join our student-led sports communities. Take your pick from a host of activities ranging from tennis to volleyball, football to bouldering, running to basketball and more.

London offers countless opportunities to get involved in team sports at every level. Find a hockey or football club or have fun with ultimate frisbee and tag rugby – whatever your tastes, you'll be spoilt for choice.



Join the pack

Our students are known as 'huskies' after the university mascot, a Siberian Husky. You'll see references to huskies in our sports teams, student activities, socials and more.





Where you'll live

Make yourself at home

Finding the right place to call home is a must, and our accommodation team is here to support you.

Whether you need information about housing options, advice on locations to suit your budget or help understanding a rental contract, we've got you covered.

Purpose-built student accommodation

Purpose-built student accommodation offers modern, hassle-free living designed around the student experience. They aren't just places to sleep, but vibrant communities where you can thrive academically and socially. With purpose-designed study spaces, social areas, gyms and regular events, these buildings support every aspect of student life.

Private rentals

Private rentals allow you to experience true independent living, with the freedom to create a home that's uniquely yours, and typically offer excellent value for money when shared between several students. Renting with friends means you can choose your housemates, pick your ideal location, and enjoy a space and character that suits you.

Living at home

Living at home can help you save money and stay close to family support. There are excellent transport links to campus, and many students use their commute to read, plan their day or simply decompress between lectures and home life.

We're here to help

You'll find up to date information on accommodation on our website, and the team is always on hand to answer any questions you might have.



Finding your perfect home

Our housing team can help your search with a comprehensive list of purpose-built student accommodation options, or guidance and resources for navigating the private rental market.



Get the right support, when and how you need it

Starting university is an exciting milestone – but we know it can be a daunting prospect, too.

You're much more likely to succeed if you feel confident about where to go when you need help or advice. That's why we're here at every step, with support in the way you need it.

Your welfare is our top priority. Our student support services can offer advice on keeping a healthy balance between your studies and your personal wellbeing.

Your designated academic adviser can help you adapt to university studies.

That could include support with organisation, time management and study skills, as well as guidance when it comes to choosing electives.

In fact, we offer support for every aspect of university life, including:

- academic and study support
- disability and learning support
- careers advice
- mental health and wellbeing
- financial advice
- accommodation and housing support
- safeguarding and harassment prevention

So you'll never need to worry because you'll know you can get the right support when you need it.

“*There is great support available. From academic advising to residence life coordinators, Northeastern University London has provided me support with any question in any scope, and I know that there is always someone that I can turn to if I need help.*

Annika B, Psychology student

Help with money skills

Every student has access to a financial wellbeing platform, **Blackbullion**, with tips and tools for budgeting and planning.





93% of our 2023 graduates are employed or enrolled in postgraduate studies*

Start your career here

We know your undergraduate degree is the first step towards your future career – and we're to help you from day one.

We'll support you to identify your goals, guide you on your chosen path and ensure you're ready for the day after graduation. Your dedicated careers counsellor will work with you to understand your career aspirations – and if you're not sure what they are yet, they'll help you explore your options.

You'll be matched with a highly experienced careers adviser specialising in your chosen sector. Your adviser will support you to:

- understand the experience and skills you need to stand out as a candidate
- identify prospective employers in your field and develop your networking skills
- draft CVs and cover letters that make a strong impression

Our team has expertise in a range of fields, from the creative arts and media to government, law, finance and more – so you're sure to receive support that's tailored to your goals.

You'll also benefit from careers workshops and talks on topics including self-branding, applications, interviews and networking, with guest speakers in a range of fields.

Through our global alumni network and business partnerships, you can build relationships with potential employers long before you graduate. And thanks to our focus on learning through experience, you'll have examples of real-world impact to talk about – giving you a crucial edge in interviews.

* Source: National Graduate Outcomes Survey 2025

“ Working with an external partner was an invaluable way to gain experience with hands-on learning. Meeting with and talking to industry professionals was also a great way to start building connections within the field.



Mackenzie G, Politics and International Relations student

Choose your study programme

Our range of undergraduate degree programmes for 2027 entry is listed below.

Degree title	UCAS code	Eligible for semester in the USA	Eligible for co-op work placements*	Eligible for double degree
Business BSc (Hons)	BU1A	✓	✓	✓
Computer Science & Business BSc (Hons)	CS1B	✓	✓	✓
Culture, Technology & Global Challenges BA (Hons)	CTG1	✓	✓	✗
Data Science BSc (Hons)	D1S2	✓	✓	✓
Economics BSc (Hons)	1ECO	✓	✓	✓
English BA (Hons)	2ENG	✓	✓	✓
History BA (Hons)	H1ST	✓	✓	✓
Law LLB (Hons)	L4AW	✗	✓	✗
Philosophy BA (Hons)	PH1L	✓	✓	✓
Philosophy & Computer Science BSc (Hons)	P1C5	✓	✓	✓
Politics & International Relations BSc (Hons)	P21R	✓	✓	✓
Psychology BA (Hons)	6P5Y	✓	✓	✓



For the latest detailed information on each degree, scan the QR code.

* The availability of co-op work placements is dependent on sufficient opportunities being provided by our employer partners, and cannot be guaranteed.





Entry requirements

Our typical entry requirements are:

A-levels

- our typical offer is ABB-BBB

IB

- our typical offer is 32-34 points overall including TOK and the Extended Essay, or alternatively 6,6,5 in Higher Level subjects with an overall pass in the IB Diploma

American High School Diploma

- our typical offer is an unweighted GPA of 3.3/4.0 plus a form of standardised testing e.g. ACT, SAT or AP examinations.

We also accept equivalent UK and international qualifications.



Scan the QR code for details.

We review applications holistically considering your interest in the subject, academic performance, references, background and potential. If you're predicted to achieve below our typical offer, we'd still like to hear from you, and we may invite you to an interview to learn more about you.

How to apply

1. Choose your degree programme

Find your programme from the list on page 26 and visit our website for detailed information.

2. Submit your application

You can apply to us in one of three ways:

UCAS

Select us as one of your five choices through UCAS. Our institution code is N53 and the institution name is Northeastern University London.

Apply direct

If you are only applying to Northeastern University London, you can apply directly via nulondon.ac.uk. We accept direct applications on a rolling basis, so you can apply before or after the UCAS deadline.

Common App

If you are an international student, you can also apply via Common App.

3. Application review

Our admissions team carefully considers every application we receive. We'll look at your predicted or achieved grades, your school performance, and your personal circumstances and background.

You may be invited to an interview so we can get to know more about you, which will take place online.

4. Offers

Our admissions team will let you know whether we plan to make you an offer. If you do receive an offer from us, we will then send you a formal offer pack.



Important dates and deadlines

2026

March – September

Research courses, attend a UCAS fair, shortlist your universities.

12th May

UCAS applications open for 2027 entry – register your account and start your application.

June

Meet staff and students at our open day.

1st August

Applications open for people applying via Common App.

1st September

Your UCAS application can be submitted once completed.

October – November

Meet staff and students at an autumn open day.

November 2026 – June 2027

Look out for confirmation of a decision on your application.

2027

13th January

UCAS application deadline to guarantee equal consideration.

January – April

If we make you an offer, we'll invite you to an offer-holder day.

January – August

Research bursaries and scholarships.

March – May

Apply to Student Finance England before the end of May to make sure your student finance is in place for the start of term.

June

Our accommodation bookings open.

June – August

Results time. We hope you get the grades you're aiming for.

2nd July

Clearing opens for students who have their results, and either aren't holding any offers or are yet to apply.

September

Congratulations, it's time to join the pack!

Welcome week starts 1st September.

Widening participation

You're welcome here, whatever your circumstances

We know not everyone is starting from the same place. If you're facing extra barriers on your academic journey, we're here to help you succeed.

Contextual offers

Contextual offers are how we make sure talented students from all walks of life have a fair shot at securing a place with us. This means we look at the whole picture – not just your predicted grades, but your background, your school performance and any other information that helps show your potential.

We particularly focus on prospective students from widening participation groups, such as those who:

- attend a school on our widening participation list
- have spent time in care
- are estranged from their family
- are a young adult carer
- receive, or have received, free school meals
- are a forced migrant, refugee or asylum seeker

If you meet certain criteria, we may offer you a place with more flexible entry requirements.

Support before you start university

Starting university can be exciting and daunting in equal measure. You're bound to have lots of questions, and perhaps some worries, especially if your situation is complex. We're here to help remove the stress.

If you're from a widening participation background, when we make you an offer, our widening participation team will be in touch to provide help. They can advise on applying for student finance and bursaries, accommodation, student life and more.

Bursaries

We want you to be able to focus on your studies and student life, without worrying about money. That's why we offer means-tested bursaries to help with living costs, accommodation or tuition fees.



To find out more about contextual offers and travel support scan the QR code.



NORTHEASTERN



DID YOU KNOW?

We can provide financial support to cover the cost of travel to attend our on-campus events such as open days and offer holder days.

Fees and funding

Tuition fees

In 2026/27 our undergraduate tuition fees for UK students were £9,790 per year. We review these annually in line with government regulations, as do all UK universities.

Fees for UK and international students for 2027/28 entry will be shown on the individual degree programme pages on our website as soon as they are confirmed.

Tuition fee loans

If you're eligible, you can apply for a government-funded loan to cover tuition fees, which isn't repaid until you're in employment and reach the income threshold. To find out more, visit [gov.uk/student-finance](https://www.gov.uk/student-finance)

Maintenance loans

If you're resident and settled in England, you may be eligible for a maintenance loan from the Student Loans Company. The amount you can apply for will depend on your household income. For further details, visit [gov.uk/student-finance](https://www.gov.uk/student-finance)

Bursaries

If you're paying Home student tuition fees, you may be able to apply for a means-tested bursary. Bursaries are paid in cash to support with living costs, or can be applied as a deduction/offset to your tuition fees.



EU students

If you're an EU, EEA or Swiss citizen, you may be considered a Home student for tuition fees if:

- you have settled status, Indefinite Leave to Remain or permanent residency, **and**
- you have been living in the UK or Islands for the three years immediately before you start your course (if you were not staying mainly for education).

Students from Ireland have Home fee status in the UK.

We're always happy to help with any questions – just contact us on undergraduate.study@nulondon.ac.uk

All information is correct at the time of publication but may be subject to changes in UK government funding policy.



97 countries – the number of nationalities represented among our staff and students.

International students

One of the things that makes Northeastern University London so special is our diverse community of students from around the world.

The variety of experiences and perspectives they bring make our campus a fantastic place to expand your horizons. And wherever you're from, the thriving global city of London is the perfect place to embark on your studies.

We know there's a lot to think about when you're applying to study abroad. Our friendly team is here to help make the process easy, supporting you both before you get to the UK and after you arrive.



As a mixed-nationality student in the United Kingdom, I am drawn to the exceptional opportunity to immerse myself in various professional cultures and interact with people from diverse backgrounds, so I can prepare to enter our internationally connected world.



Elena M, Business student

Student visas

If you're an international student, you may need a UK student visa to study in the UK. Northeastern University London is licensed by the government to sponsor your visa application, and our dedicated Office of Global Services UK team is here to help guide you through the process.

English language requirements

If you're not a national of a majority English speaking country, you'll need to show you're proficient in English to study with us.



To find more information on the test results and qualifications we'll accept, scan the QR code.



“

Everyone at the university was friendly, welcoming, and inviting. The talks were informative, especially about careers, and I got to ask any questions I had about the courses. Overall, a wonderful experience!

Open day attendee



We'd love to meet you...

Life at Northeastern University London is filled with excitement, variety and inspiration. But don't just take our word for it: come and see for yourself!

Open days

Explore our vibrant campus and state-of-the-art facilities in the heart of London:

- Experience first-hand the dynamic energy of our campus.
- Learn how we support our students throughout their time with us.
- Join a subject session to get a taste of our teaching.
- Talk to our academic staff about the subjects you're interested in.
- Chat with current students to learn what it's really like to study here.

Join a campus tour

Led by current students, our weekly campus tours give you a unique and personal perspective on life at the university. See the spaces where you'll learn and relax, get real insights from students who live the experience, and hear about student life, clubs and resources. Ask all your burning questions in a relaxed, informal setting.

Book now

Whether you join us in person or online, you're sure to get a true feel for university life.

Book your place now




Connect with us

Follow us

Connect with our student and staff community at

@NortheasternLDN



 @Northeastern.LDN

Watch our video

youtube.com/watch?v=xPWRz0IYVsl

Chat with a student

Connect with our student ambassadors at nulondon.ac.uk/unibuddy

Ask a question

Contact our admissions team at undergraduate.study@nulondon.ac.uk

Northeastern University London

Devon House
58 St Katharine's Way
London E1W 1LP
United Kingdom

nulondon.ac.uk
study@nulondon.ac.uk
+44 (0)20 7637 4550

This document was produced in February 2026, and contains information on programmes and services Northeastern University London intends to offer to students starting university in September 2027. Every effort has been made to ensure the information is accurate at the time of publication. For the most up-to-date information before you apply for a place and before accepting your offer, and regularly thereafter, please visit nulondon.ac.uk to check for any changes in information. For full terms and conditions visit nulondon.ac.uk/terms-and-conditions